

21 Chifley Drive Delacombe VIC

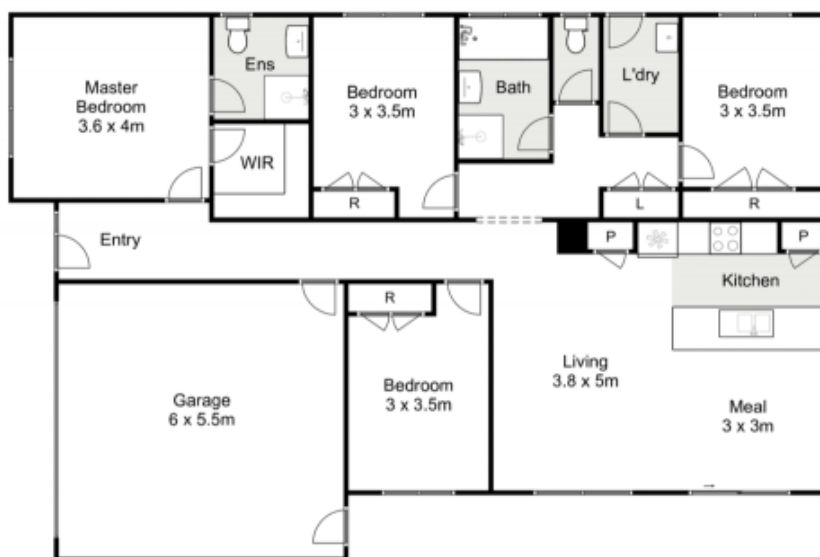
4 2 2

Located within the thriving community of Delacombe, just a leisurely stroll from the bustling Delacombe Town Centre, awaits an immaculately maintained family residence that epitomizes both comfort and convenience.

Step into this charming abode and you'll be greeted by a spacious interior that effortlessly accommodates the needs of modern living. This four-bedroom gem offers a haven of comfort, with the master suite featuring a walk-in robe and an ensuite that exudes luxury.

The heart of this home beats in its generously proportioned open-plan kitchen and living area. Whether it's culinary creations, family gatherings, or simply unwinding after a long day, this versatile space has you covered. The kitchen is well-appointed with contemporary appliances, ample storage, and workspace, making meal preparation a

Price : \$549,000 - \$589,000
Building Size : 142 sqm
Land Size : 387 sqm
View : <https://www.ypa.com.au/7746269>



21 Chifley Drive, Delacombe



Whilst every attempt has been made to ensure the accuracy of the floor plan contained here, measurements of doors, windows, rooms and any other items are approximate and no responsibility is taken for any error, omission, or mis-statement. This plan is for illustrative purposes only and should be used as such by any prospective purchaser. The services, systems and appliances shown have not been tested and no guarantee as to their operability or efficiency can be given.

