



## 14 Gillespie Drive Weir Views VIC

4 2 2

This gorgeous family home is nestled in the heart of Weir Views which offers convenience and luxury. Situated close by to all this community has to offer such as schooling, shops, recreational reserves, public transport and so much more, this property is the perfect opportunity for first home buyers, investors and families alike.

Upon entry you are met with the master bedroom, which features an abundance of natural light and is further complimented by a walk-in robe and stunning ensuite with an inviting colour palette.

The remaining bedrooms are all great in size and feature built in robes and are serviced by a bright central bathroom continuing with the same quality as the ensuite.

The heart of the home offers a modern kitchen complete

**Price** : \$ 502,000

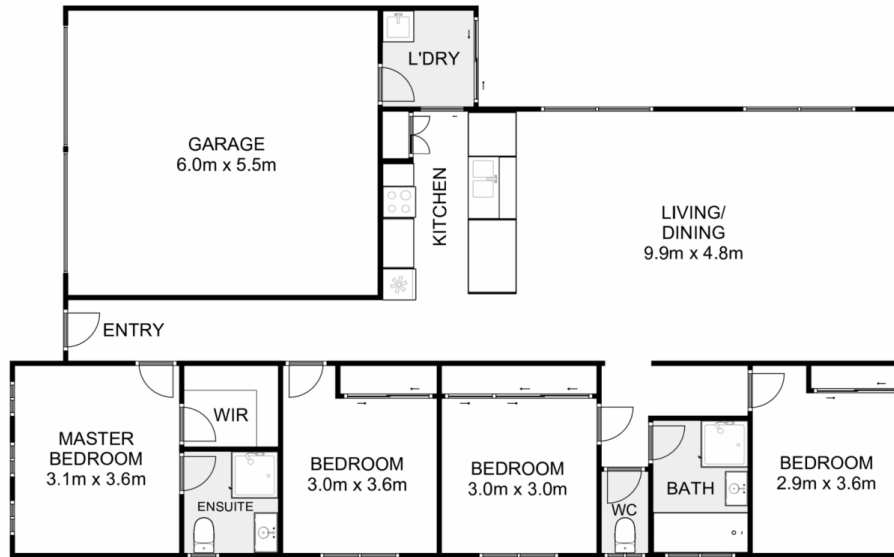
**View** : <https://www.ypa.com.au/7743641>



**Shane Spiteri**  
0488 980 115



**Monty Tyagi**  
0435 896 907



## 14 Gillespie Drive, Weir Views

Ypa

Whilst every attempt has been made to ensure the accuracy of the floor plan contained here, measurements of doors, windows, rooms and any other items are approximate and no responsibility is taken for any error, omission, or mis-statement. This plan is for illustrative purposes only and should be used as such by any prospective purchaser. The services, systems and appliances shown have not been tested and no guarantee as to their operability or efficiency can be given.

