



## 2 Brierly Court Sunbury VIC

4 2 2

Welcome to the charming Killara estate, where this exquisite family home awaits you. Nestled on a generous 651m<sup>2</sup> (approx.) block in this quiet court location, this property is a true testament to comfortable living. From the moment you approach the driveway, you will witness the meticulously landscaped gardens.

Upon entering through the front door, you'll be greeted by an inviting formal living area, perfect for welcoming guests or enjoying quiet evenings with your loved ones. This home boasts four bedrooms, each equipped with built-in robes, while the master bedroom enjoys the luxury of a private ensuite. The main bathroom, complete with a separate toilet, caters to the needs of your family.

The heart of this home lies in its open-plan kitchen and dining area looking out to the beautiful backyard. The

**Price** : \$ 650,000  
**Land Size** : 651 sqm  
**View** : <https://www.ypa.com.au/7734632>

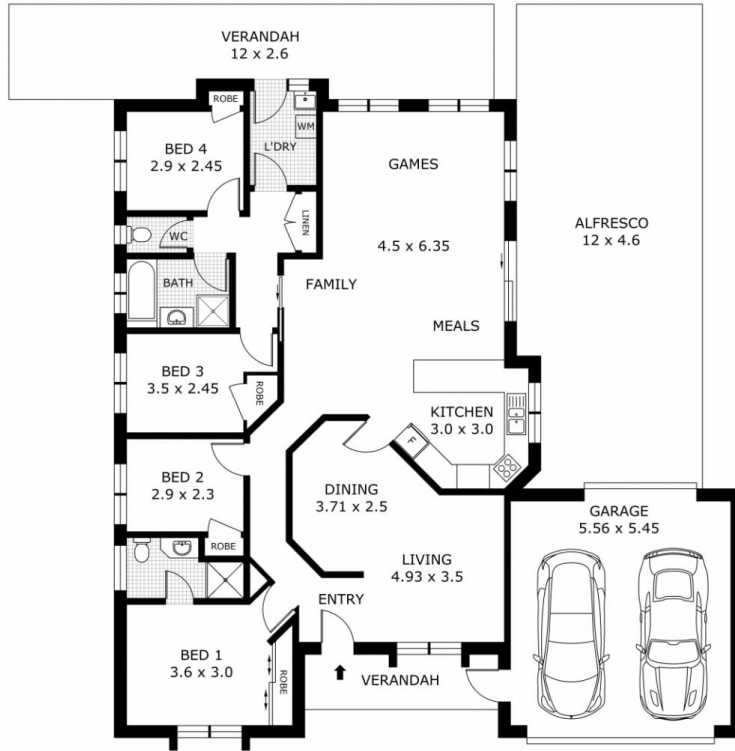


**Patrick Kilkeny**  
0401 175 248



**Cassandra Doria**  
0497 972 028

2 Brierly Court, Sunbury



Disclaimer: All images, views and diagrams are indicative only. Dimensions, areas and landscape are indicative and subject to change without notice. Purchasers should check the plans and specifications included in the terms of the contract of sale carefully prior to signing the contract.