



5 Archer Drive Kurunjang VIC

4 2 2

Welcome to an extraordinary family haven, a spacious retreat that combines comfort, style, and the allure of abundant space. Situated on a massive 1,015m² (approx.) allotment in an impressive neighbourhood and within close proximity to schools, freeway access, shopping and parklands, this one-of-a-kind property is on offer for one lucky family to call home.

As you step inside, you'll immediately notice the generous proportions of this home. The huge master bedroom situated at the front of the home offers optimal space and comfort further complimented by a spacious walk-in robe and stunning ensuite featuring a larger shower. All remaining bedrooms are also great in size and feature built in robes and are serviced by a bright central bathroom with similar features as the ensuite.

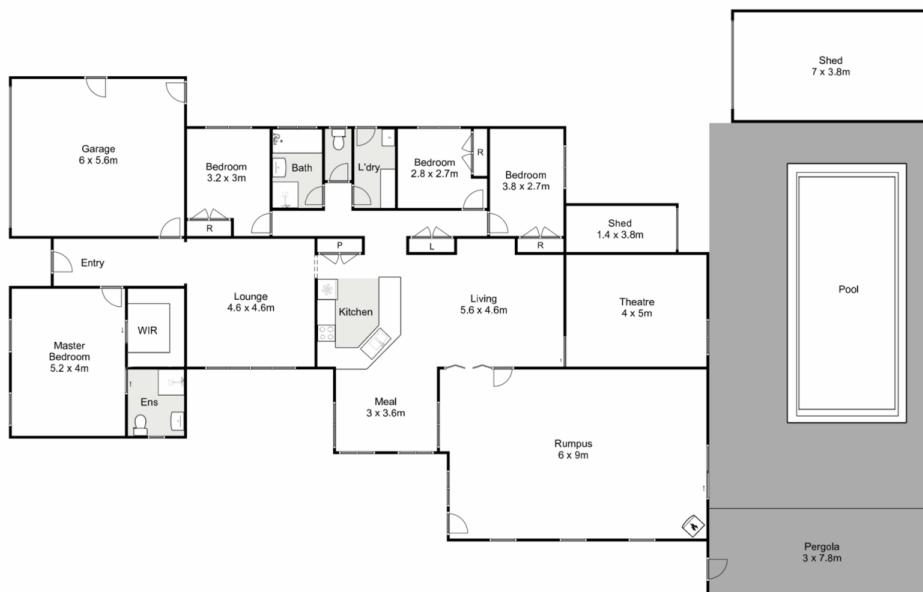
Land Size : 1015 sqm
View : <https://www.ypa.com.au/7729930>



Shane Spiteri
0488 980 115



Ryan Anders
0434 900 300



5 Archer Drive, Kurunjang

YPA

Whilst every attempt has been made to ensure the accuracy of the floor plan contained here, measurements of doors, windows, rooms and any other items are approximate and no responsibility is taken for any error, omission, or mis-statement. This plan is for illustrative purposes only and should be used as such by any prospective purchaser. The services, systems and appliances shown have not been tested and no guarantee as to their operability or efficiency can be given.

