



32 Waverley Park Drive Cranbourne North VIC

3 2 2

Explore the charm of this beautiful brick family home, gracefully situated on a spacious 627 m² property, exuding pride and character. This home offers unique family living with gorgeous design details throughout, a superb outdoor entertaining area, dual living zones, spacious rooms, and an expansive backyard.

Step into a stunning, sunlit living area, perfect for the entire family, creating a welcoming and inviting atmosphere. Saunter through to the bright central living zone with expansive windows bringing in beautiful rays of natural light. Neutral tones and an open floorplan make this space feel spacious and inviting. The kitchen boasts chic white cabinets, a breakfast bar, and high-quality appliances, offering abundant storage for your daily cooking needs. The inviting lounge and dining area provide an ideal setting for creating cherished memories with family and friends.

Price : \$ 675,000
Land Size : 627 sqm
View : <https://www.ypa.com.au/7726506>

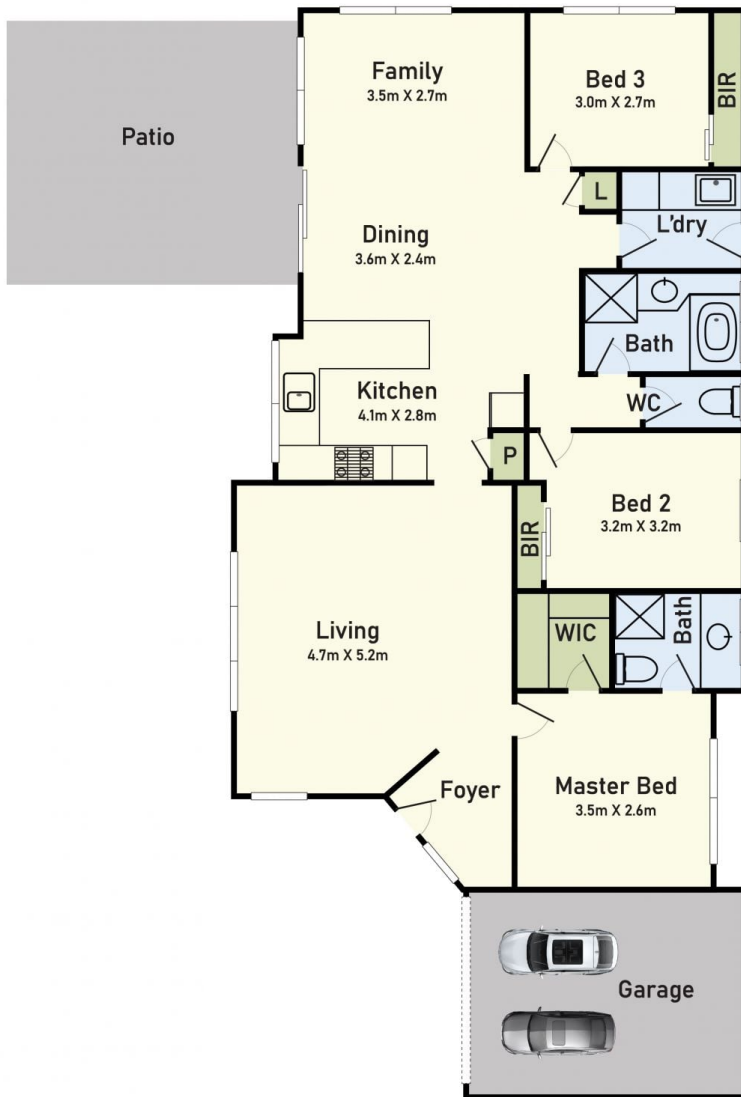


Ratnakar Panigrahi
0425 794 659



Khushboo Joshi
0432 539 506

Floor Plan



Site Plan



32 Waverley Park Drive, Cranbourne North, VIC 3977

* Dimensions are approximate and for illustrative purposes only