



## 28 Beacon Road Port Melbourne VIC

4 1 2

What a fantastic opportunity to secure a solid Bank House positioned perfectly within short walking distance to Port Melbourne Secondary College, Port Melbourne Primary School, Garden City reserve (Dragon Park), Murphys Reserve, Bay Street Cafes, Restaurants & shops, Princes Pier/Station Pier, Port Melbourne Beach, Woolworths, and the bus stop right across the road.

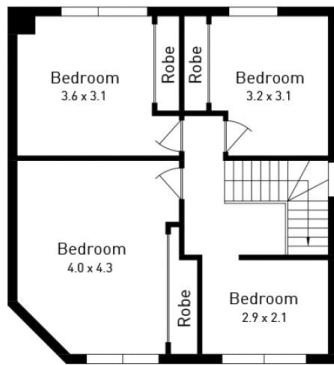
Soaring 9ft ceilings, Baltic Pine timber floors, freshly painted throughout, brand new carpets, a fantastic timber kitchen with a striking Redgum bench top, walk in pantry space, gas cooking, Bosch dishwasher, gas log fire, gas heater, ceiling fans, attic storage, garden shed, small cubby house and a double lock up garage with rear access.

Presenting generous sized bedrooms with built in robes, separate study or 4th bedroom, bathroom downstairs with

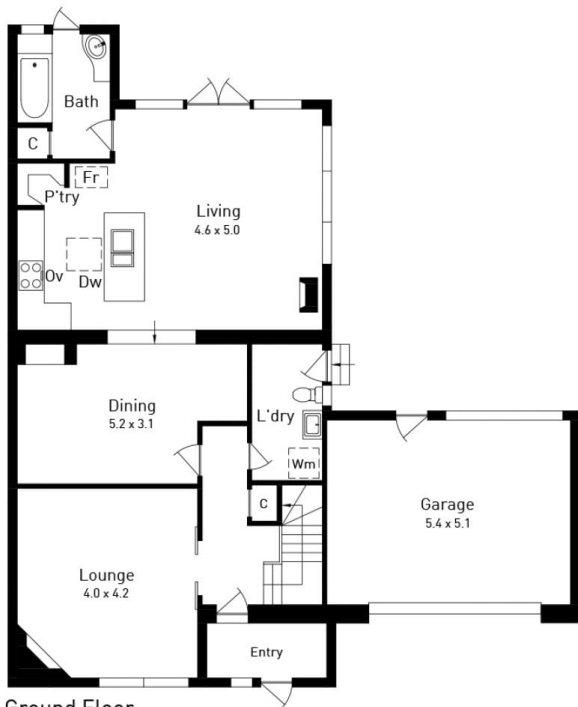
**Price** : \$ 1,885,000  
**Land Size** : 380 sqm  
**View** : <https://www.ypa.com.au/7724657>



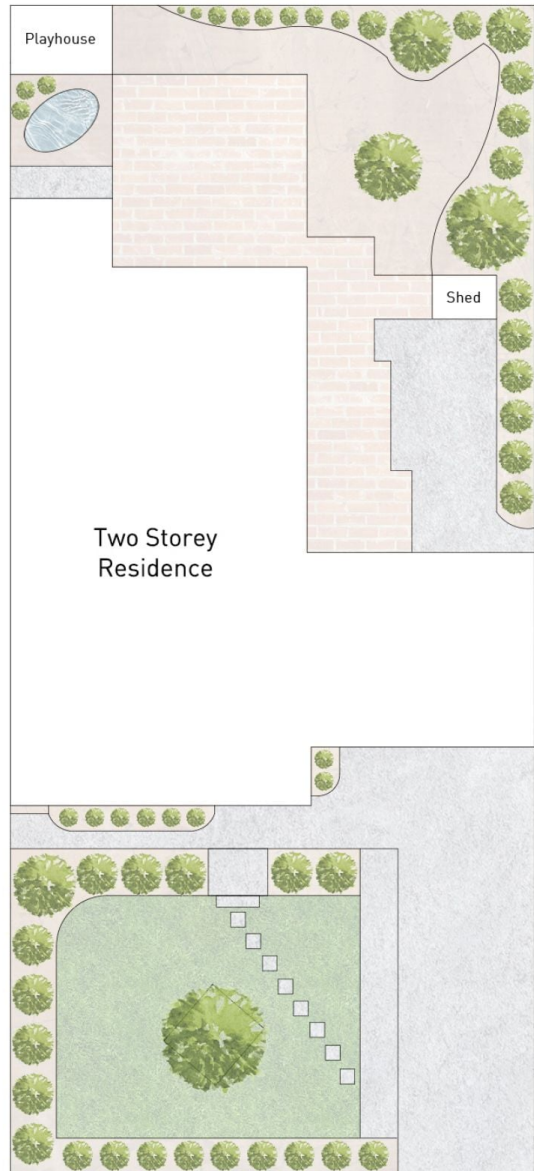
**Bassam Tofaili**  
0477 972 229



First Floor



Ground Floor



Two Storey Residence



## 28 Beacon Road, Port Melbourne



Disclaimer: Please note this floor plan is for marketing purposes and is to be used as a guide only. This floor plan is intended to give a general indication of the layout only. Any statements of distance, size or area are approximate and for indicative purposes only.