



16 Treehouse Avenue Clyde VIC

4  2  2 

Immaculately presented, this expansive and breathtaking residence is sure to captivate your heart. Nestled in the coveted location of Clyde, this exquisitely crafted home seamlessly harmonizes with its prestigious surroundings. Spanning across two remarkable levels, the impressive layout caters to both grand-scale entertaining and comfortable daily living. Soft modern hues infuse the space with a sophisticated yet tranquil ambiance.

Designed with modern family living in mind, this two-story gem boasts 4 bedrooms, 2 bathrooms, 2 study nooks, multiple spacious entertainment areas, and a double car garage. Situated in a serene and convenient suburb, this property offers a harmonious blend of quiet living and accessibility.

Upon entering, you're greeted by a well-appointed study,

Price : \$ 950,000

View : <https://www.ypa.com.au/7719397>

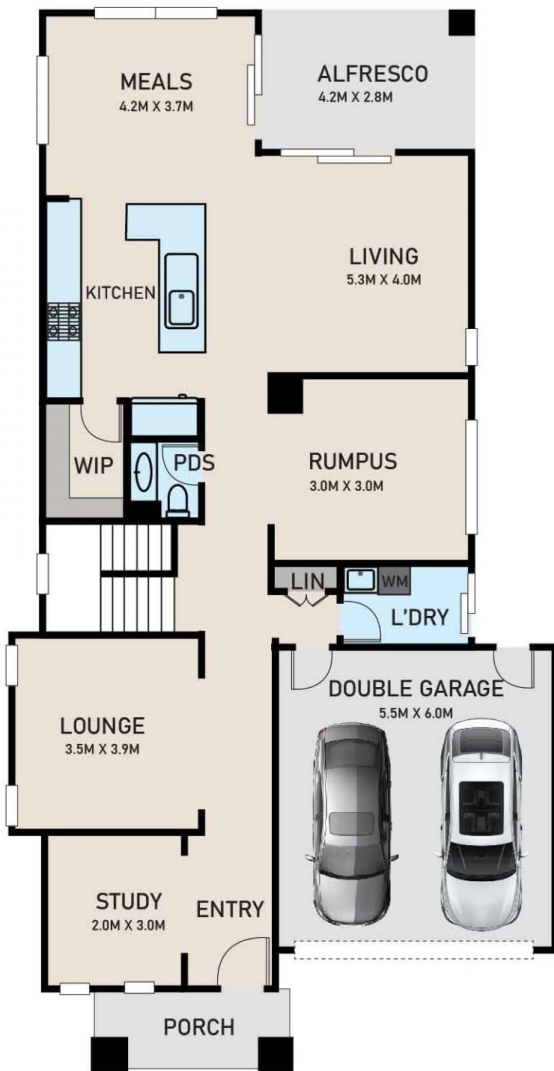


Kulwant Singh
0412317190

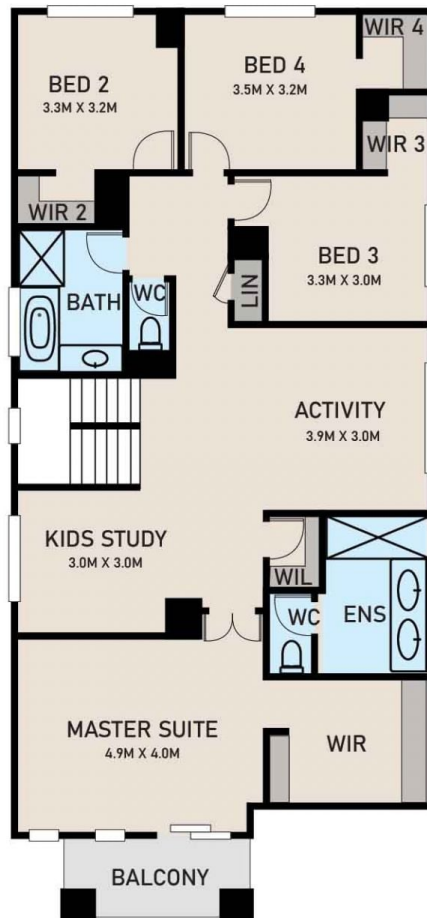


Rajiv Ranjan
0413 775 214

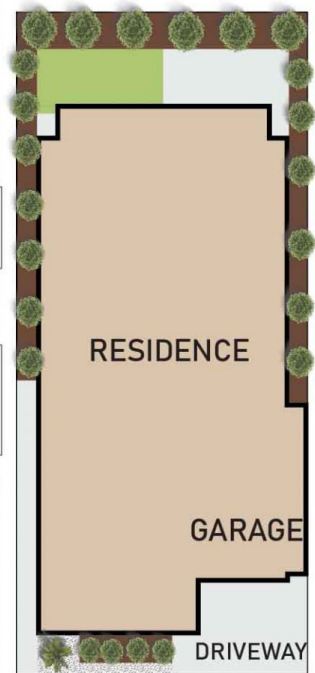
GROUND FLOOR



FIRST FLOOR



SITE PLAN



16 TREEHOUSE AVENUE, CLYDE

* DIMENSIONS ARE APPROXIMATE AND FOR ILLUSTRATIVE PURPOSES ONLY

