

## 568 Elizabeth Drive Sunbury VIC

4  2  1 

Here is your chance to break into the flourishing Sunbury Market at an affordable price range. In a very desired location on Elizabeth Drive, you are amongst some of Sunbury's most outstanding amenities which include the new shopping precinct at Rosenthal, Sunbury Downs College and Boardman Stadium, public transport, close proximity to the Calder freeway and a short drive into Sunbury's township.

This family home has been loved for many years and has been kept well, inside you will find 4 bedrooms, 2 bathrooms and two completely separate living rooms. In the centre of the home, you will see an updated kitchen, complete with a free standing oven, lots of bench and cupboard space and adjoining the meals area which provides access to an undercover entertaining space.

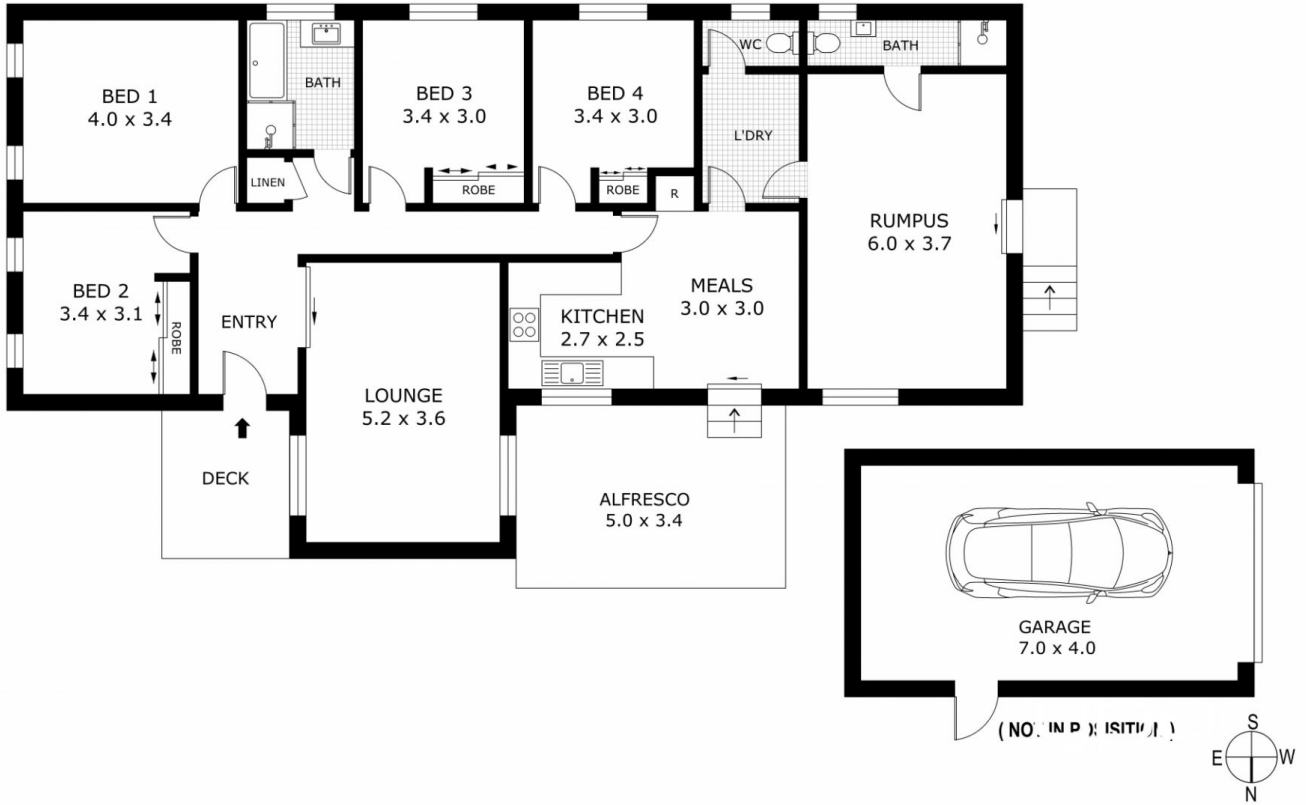
**Price** : \$ 569,000  
**Land Size** : 653 sqm  
**View** : <https://www.ypa.com.au/7717896>



**Lisa Totaro**  
0410 144 215



**Cassandra Doria**  
0497 972 028



Disclaimer: All images, views and diagrams are indicative only. Dimensions, areas and landscape are indicative and subject to change without notice. Purchasers should check the plans and specifications included in the terms of the contract of sale carefully prior to signing the contract.