



ypa



ypa



ypa



ypa

34 Wilandra Way Clyde VIC

4  2  2 

Experience the ultimate in contemporary family living within this single-story sanctuary. Flooded with natural light, the neutral interior seamlessly combines modern style with a welcoming atmosphere. Revel in a recreational room for endless enjoyment and a soothing ambiance throughout.

The central living area instantly invites relaxation with its expansive windows that invite the outside in. The modern kitchen is a culinary enthusiast's delight, featuring beautiful light stone countertops, a generously sized island with a breakfast bar, and top-of-the-line stainless-steel appliances, including a dishwasher.

Entertain guests and loved ones in the stylish dining area, perfect for hosting dinner parties or everyday meals. Unwind in the cozy lounge that seamlessly connects indoor and outdoor living, leading to a wooden decked outdoor

Price : \$ 748,000
Land Size : 447 sqm
View : <https://www.ypa.com.au/7710819>

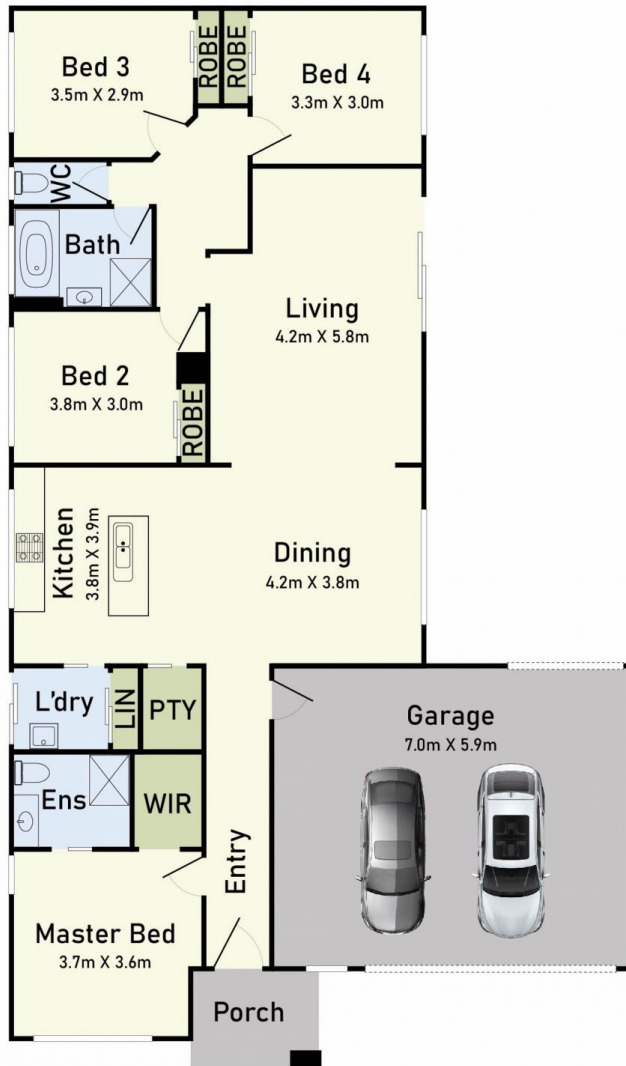


Kamaljeet Singh
0433 619 387

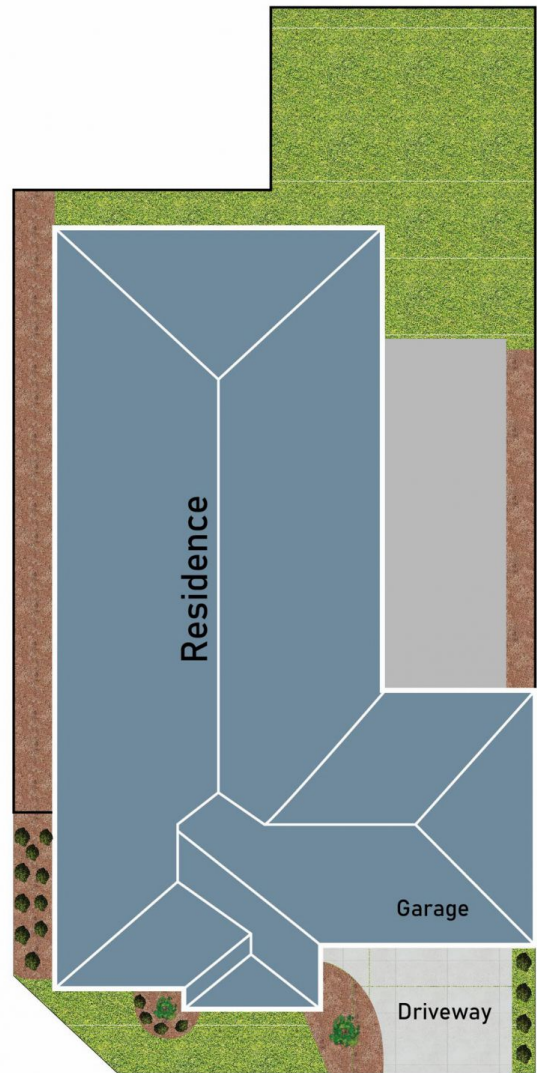


Vijay Kumar
0431 177 566

Floor Plan



Site Plan



34 Wilandra Way Clyde

* Dimensions are approximate and for illustrative purposes only

