



14 Wicklow Drive Melton South VIC

4 🏠 2 🚗 2 🚗

Just under 2 years old and positioned in one of the most desirable new pockets of Melton South, this wonderfully presented home has so much to offer to anyone looking for a quality home with ample upgrades. Within walking distance to Opalia Shopping Centre and parkland, and a short drive to schools of all levels, freeway access, and Melton South and Cobblebank Train Stations, you simply can't go wrong with this prime location!

Out front, you are first greeted with an elegant modern façade with exceptional landscaping that immediately grabs attention and sets the tone for the attention to detail we would expect from the perfect family home. The house is also equipped with a local alarm system and a front security screen door. Upon entry you are greeted with an open hallway and a spacious first living area with lots of natural light flowing into the space. You'll also notice the

Price : \$ 600,000

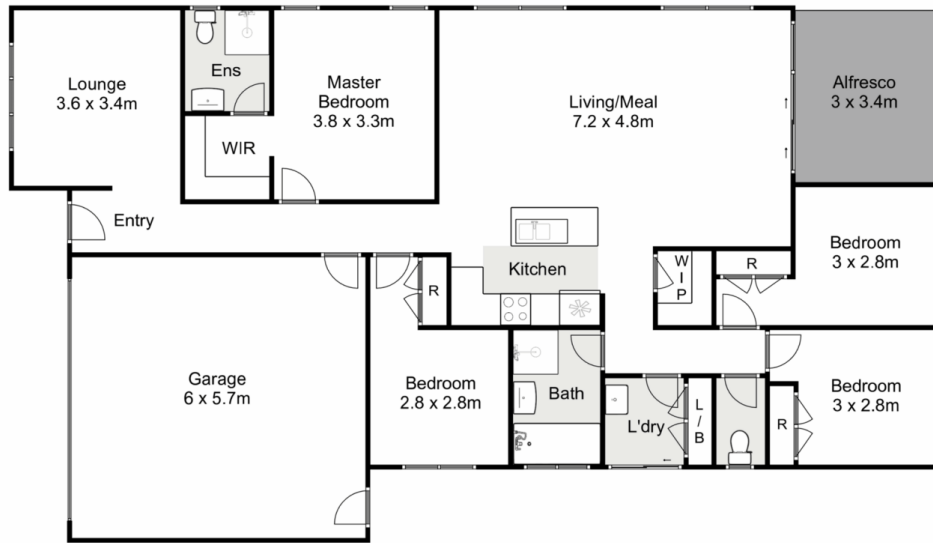
View : <https://www.ypa.com.au/7709645>



Shane Spiteri
0488 980 115



Junior MuBashar
0450 644 606



14 Wicklow Drive, Melton South

YPA

Whilst every attempt has been made to ensure the accuracy of the floor plan contained here, measurements of doors, windows, rooms and any other items are approximate and no responsibility is taken for any error, omission, or mis-statement. This plan is for illustrative purposes only and should be used as such by any prospective purchaser. The services, systems and appliances shown have not been tested and no guarantee as to their operability or efficiency can be given.

