



3 Hollyhoke Drive Maddingley VIC

3 2 2

Perfectly designed for family living, this exceptional property will not disappoint. Positioned in the highly sought-after Stonehill Estate, within walking distance to the new Maddingley Village, Maddingley Medical Centre, future primary school and Bacchus Marsh West Golf Club it's easy to see why everyone is flocking to Stonehill.

Boasting a great sized block at 445m² (approx.) this beautiful residence provides great sized room's through-out and separate living spaces, perfect for the growing family.

Comprising of three bedrooms, large master suite with walk in robe and great sized ensuite, featuring stone benchtops, oversized shower and tiled shower base. The additional bedroom wing features three great sized bedrooms with built in double robes, all serviced by the gorgeous central bathroom.

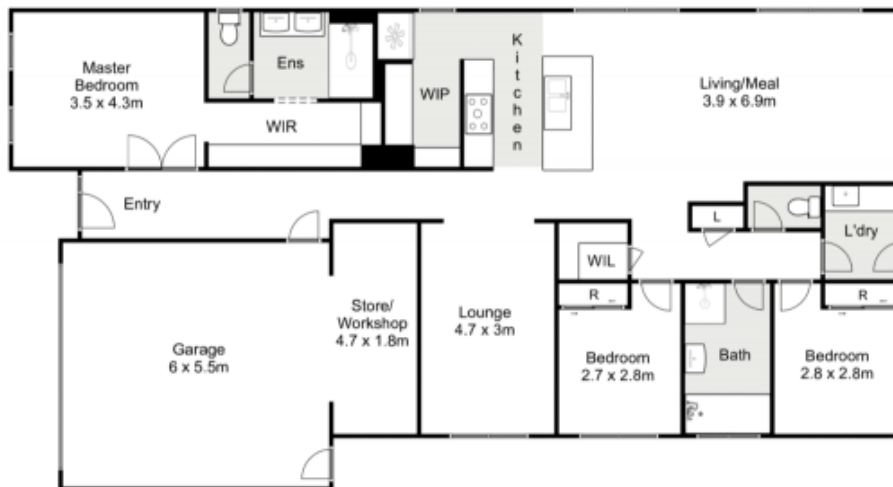
Price : \$ 635,000
Land Size : 445 sqm
View : <https://www.ypa.com.au/7700304>



Mark Edwards
0422 017 068



Lee Teuma
0411 383 533



3 Hollyhoke Drive, Maddingley



Whilst every attempt has been made to ensure the accuracy of the floor plan contained here, measurements of doors, windows, rooms and any other items are approximate and no responsibility is taken for any error, omission, or mis-statement. This plan is for illustrative purposes only and should be used as such by any prospective purchaser. The services, systems and appliances shown have not been tested and no guarantee as to their operability or efficiency can be given.

