



18 Oaktree Drive Hampton Park VIC

3 1 2

Discover the epitome of modern family living in this beautifully renovated 3-bedroom, 1-bathroom brick home nestled in a quiet pocket of Hampton Park. Set upon a generous 600 m² block, this residence offers a harmonious blend of elegant interiors and outdoor serenity, creating the perfect sanctuary for your family.

Step into a world of comfort and style as you're welcomed by the inviting ambiance of the semi-secluded lounge. This space is designed for cherished moments with your loved ones, offering a retreat that radiates warmth.

The heart of this home is the contemporary kitchen, a culinary haven adorned with sleek white cabinetry, complemented by dark stone countertops that exude sophistication. Stainless-steel appliances, including a convenient dishwasher, cater to the needs of every chef in the family. The kitchen seamlessly flows into the open-plan dining area, and comfortable semi-secluded lounge, both

Price : \$ 630,000
Land Size : 600 sqm
View : <https://www.ypa.com.au/7692156>

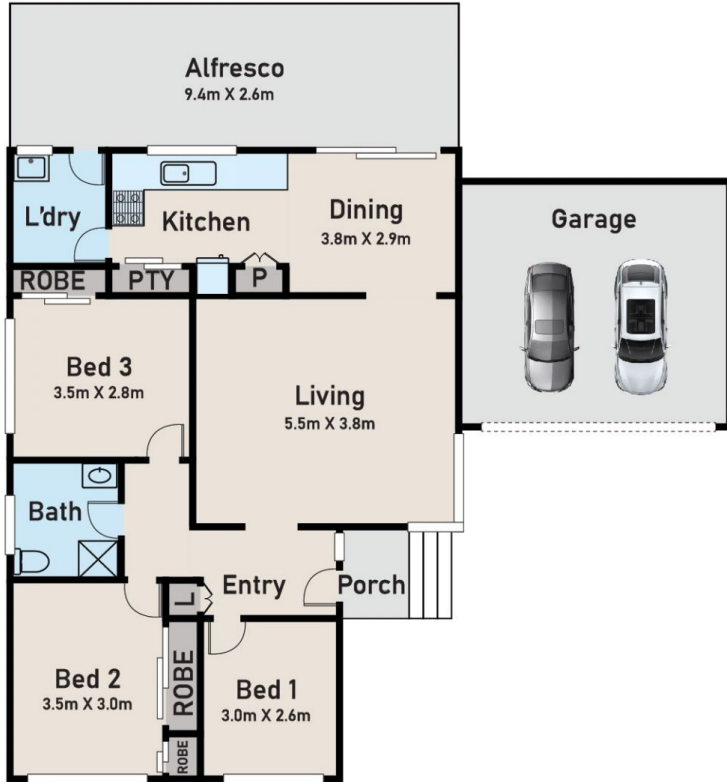


Rajiv Ranjan
0413 775 214

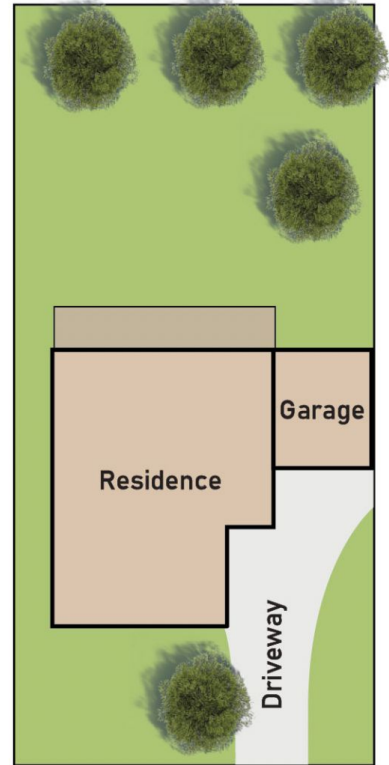


Frances Cutri
0423 485 688

Floor Plan



Site Plan



18 Oaktree Drive, Hampton Park

* Dimensions are approximate and for illustrative purposes only

ypa