



## 40 Groveton Street Craigieburn VIC

3  2  2 

Sleek, stylish and sophisticated! This stunning modern townhouse will delight anyone craving contemporary comfort. The property is perfectly positioned with only stones throw away to shops, schools, public transport, parklands and much more.

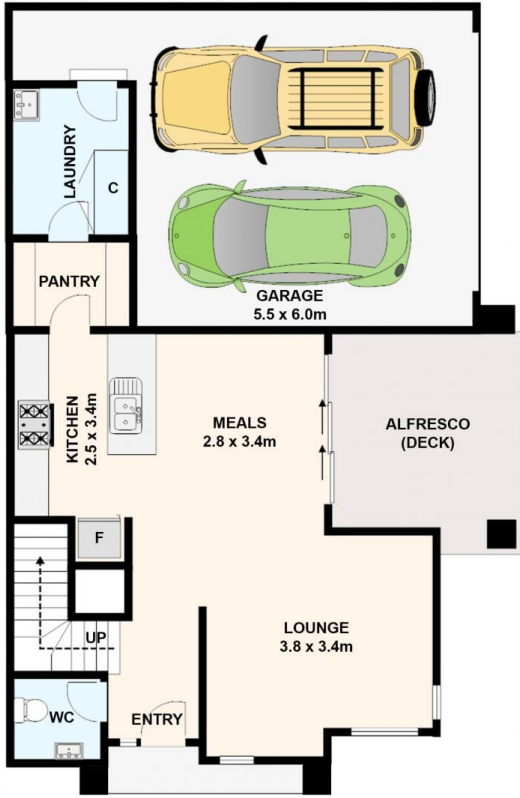
The two-story layout feels instantly spacious and inviting with generous living zone that invite you to relax and unwind. at the rear of the floorplan you will find an open kitchen, dining and family room with direct access to a covered alfresco overlooking to your low maintenance rear yard.

**Price** : \$ 505,000

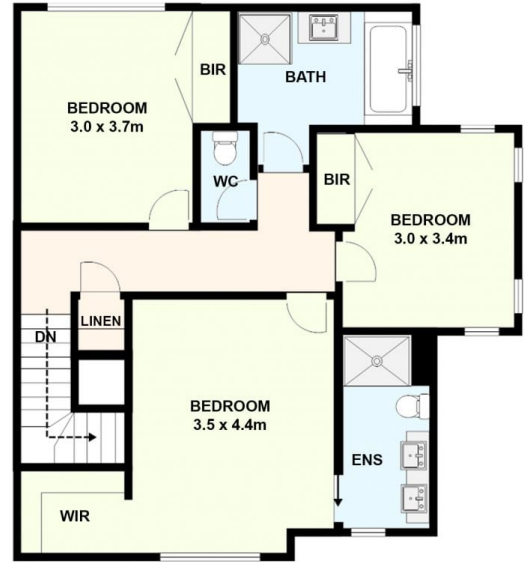
**View** : <https://www.ypa.com.au/7691958>



**Eddi Bagdadi**  
0432 208 933



Upper Level



40 Groveton Street, Mickleham.

All data and dimensions shown in this sketch are approximate.