



## 23 Nigel Crescent Gladstone Park VIC

4 2 2

Positioned in a family favourite pocket, taking in sweeping vistas to the north-east right off the front balcony, this elevated, one owner, four-bedroom home is the perfect place to settle the family, offering lots of scope to add personal touches and make it truly your own.

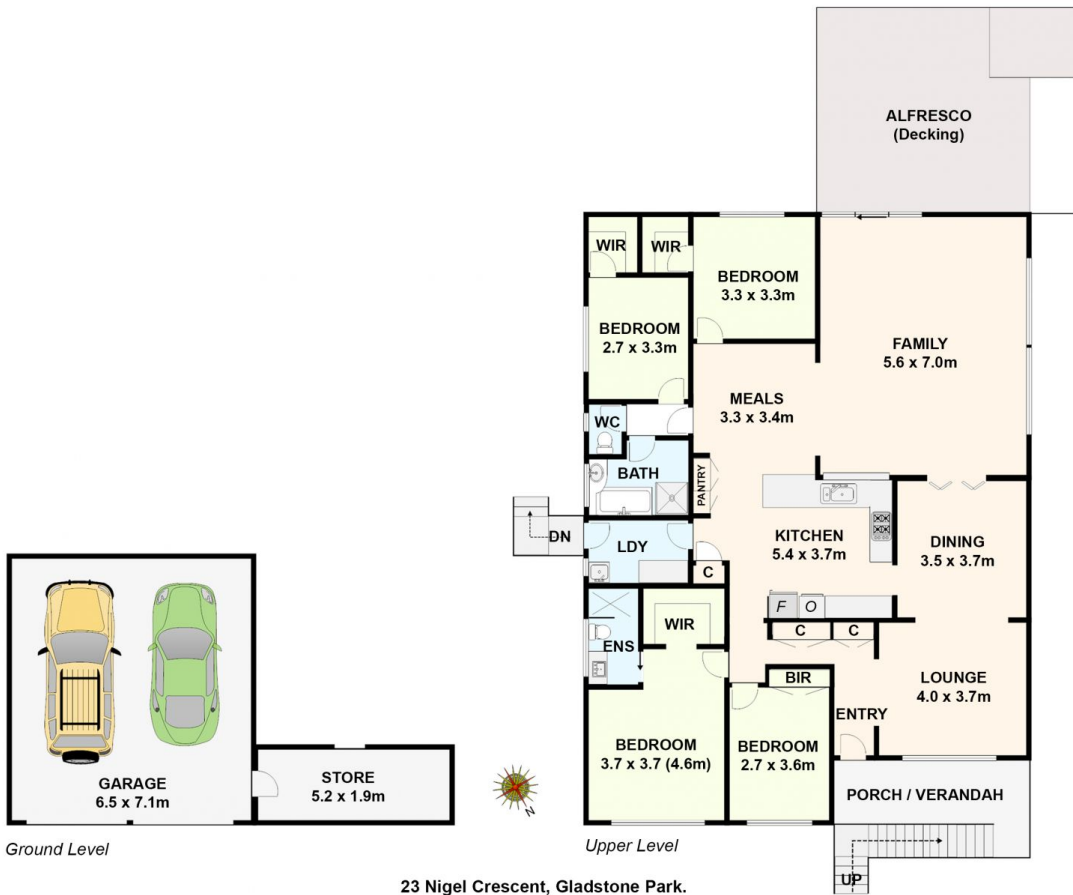
**Price** : \$ 843,000  
**Land Size** : 540 sqm  
**View** : <https://www.ypa.com.au/7688016>

Beautiful polished timber floors greet you at the entrance, leading to a generous front lounge and through to a formal dining space alongside the kitchen. Folding doors open to a huge family room, flooded with sunlight through full-height windows, which in turn flows to a casual meals area overlooked by the timber kitchen. Truly the heart of the home, it features a servery window, extensive pantry/storage and bench space, wall oven, breakfast bar, and a mobile island with storage underneath.



**Michael Sassine**  
0421 023 243

Four good-size bedrooms all have robes, the front-facing



**23 Nigel Crescent, Gladstone Park.**  
*All data and dimensions shown in this sketch are approximate.*