



## 42 Toolern Waters Drive Weir Views VIC

4 2 2

Situated on an impressive 504m<sup>2</sup>(approx.) allotment in one of Weir Views most sought after locations, sits this beautiful residence showcasing quality and ample space for a family. This home is ideally located within a short distance to lots of existing schools including Al Iman College, future government schooling, pre-schools, Melton South Train Station, Opalia Shopping Centre, Station Square, leafy and tranquil walking tracks along the Melton Reservoir and so much more upcoming. Making this location second to none.

Upon entering this stunning home you will be amazed by its immaculate presentation and open feel from the high ceilings throughout. The master bedroom sits at the front of the home showcasing ample space with a large walk-in robe and stunning master ensuite.

Moving through the home the huge kitchen provides ample

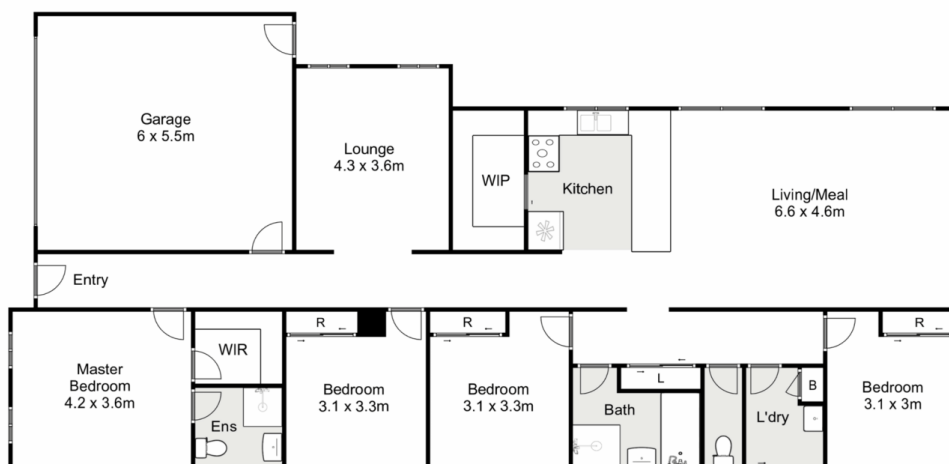
**Price** : \$ 615,000  
**Land Size** : 504 sqm  
**View** : <https://www.ypa.com.au/7685648>



**Shane Spiteri**  
0488 980 115



**Ryan Anders**  
0434 900 300



## 42 Toolern Waters Drive, Weir Views

Ypa

Whilst every attempt has been made to ensure the accuracy of the floor plan contained here, measurements of doors, windows, rooms and any other items are approximate and no responsibility is taken for any error, omission, or mis-statement. This plan is for illustrative purposes only and should be used as such by any prospective purchaser. The services, systems and appliances shown have not been tested and no guarantee as to their operability or efficiency can be given.

