



2 Illabunda Drive Werribee VIC

3 2 2

Situated in the fast-growing Harpley Estate is this near new townhouse which offers a well thought out floor plan and has a list of quality inclusions to enjoy.

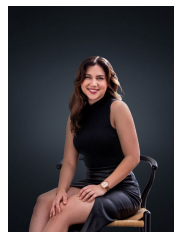
View : <https://www.ypa.com.au/7676035>

Property features include:

- ? Three bedrooms, master bedroom with ensuite bathroom
- ? Open plan kitchen, dining and living
- ? Additional study area upon entry
- ? Central main bathroom with separate laundry
- ? Double garage on remote

Extra features: split system cooling, stainless-steel cooking appliances, gas cook top, separate powder room.

Please book an inspection time and/or enquire using the



Trinity Osorio Schwarz
0426 356 739



Ali Dowling
03 9741 7777