



10 Blaxland Place Taylors Lakes VIC

4  3  2 

QUALITY RESIDENCE WITH "WOW FACTOR"

This Double Storey Family Home in a prime location with high ceilings on land 825m² approx. Features an abundance of natural light throughout and a floor plan that allows for family interaction.

Situated in one of the most highly sought-after locations of Taylors Lakes within an easy 5 mins drive to Watergardens Shopping Centre and railway station, Primary & Secondary Schools, Bus services and Parkland.

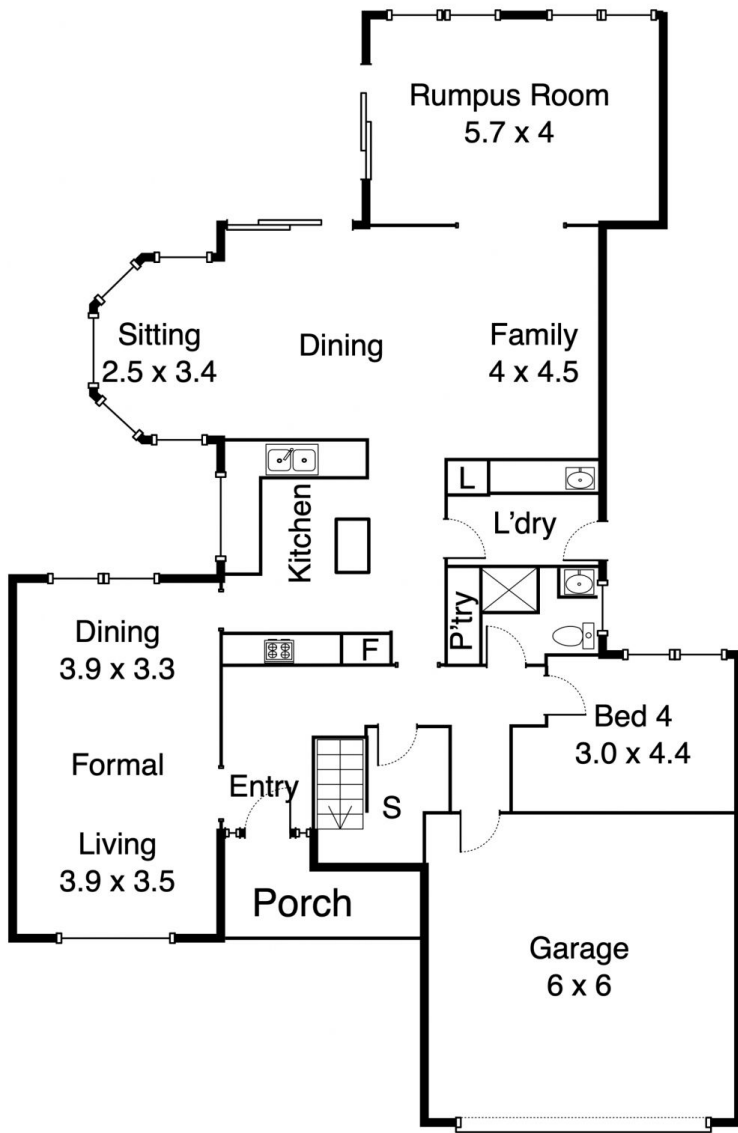
Featuring:

- ? 4 Bedrooms (BIR), master with spa-bath ensuite
- ? Spacious light filled loungeroom with formal dining
- ? Quality modern kitchen with large dining & TV area
- ? Separate family rumpus room overlooking rear gardens

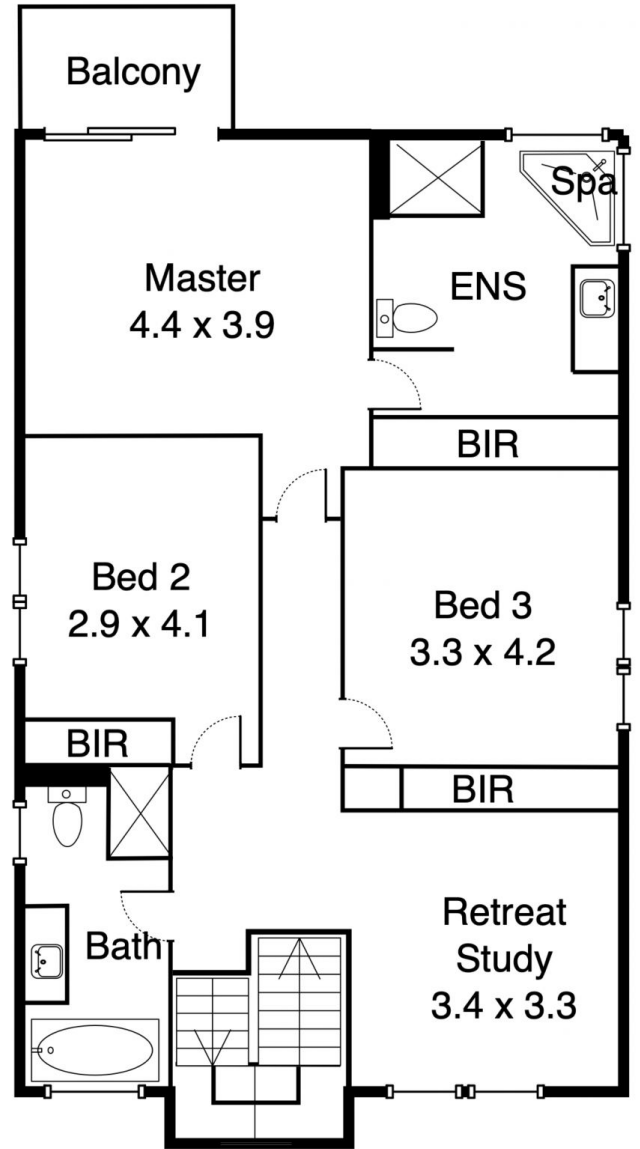
Price : \$ 1,070,000
Land Size : 825 sqm
View : <https://www.ypa.com.au/7666583>



Joe Albioli
0438 133 123



Ground Floor



First Floor

10 Blaxland Place, Taylors Lakes, VIC - 3038

*This floorplan is for illustration purposes only and no warranty is given to its accuracy. Purchasers are advised to carry out their own investigations.