



15 Skypac Street Weir Views VIC

4 🚗 2 🚗 2 🚗

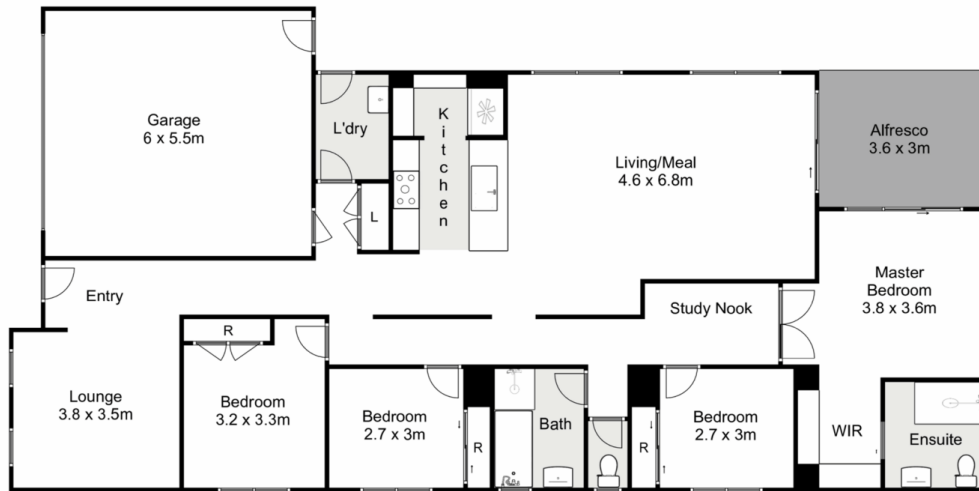
Just under a year old and positioned in one of the most desirable new pockets of Weir Views, this wonderfully presented Metricon built home has so much to offer to anyone looking for a quality home with ample upgrades. Walking distance to Opalia Shopping Centre and a short drive to schools of all levels, freeway access, Melton South and Cobblebank Train Stations, you simply can't go wrong with this prime location.

Out front, you are first greeted with an elegant modern façade and exceptionally neat, low maintenance landscaping that immediately grabs attention and sets the tone for the attention to detail we would expect from the perfect family home. Upon entry you are greeted with an open hallway and a spacious first living area with lots of natural light flowing into the space. You'll also notice the house is upgraded with evaporative cooling, ducted

Price : \$ 615,000
Land Size : 400 sqm
View : <https://www.ypa.com.au/7664747>



Junior MuBashar
0450 644 606



15 Skypac Street, Weir Views

YPA

Whilst every attempt has been made to ensure the accuracy of the floor plan contained here, measurements of doors, windows, rooms and any other items are approximate and no responsibility is taken for any error, omission, or mis-statement. This plan is for illustrative purposes only and should be used as such by any prospective purchaser. The services, systems and appliances shown have not been tested and no guarantee as to their operability or efficiency can be given.

