



14 Bowler Avenue Clyde VIC

4 2 2

Experience the extraordinary in this stunning 4-bedroom, 2-bathroom contemporary family home. Dual living zones, a beautiful alfresco, a spacious bedroom, and an open floorplan create a relaxed, modern lifestyle for your family located within 200 meters walk of Casey Fields.

Price : \$ 720,000
Land Size : 350 sqm
View : <https://www.ypa.com.au/7661783>

Effortless meal prep is guaranteed in the functional kitchen equipped with all the conveniences you could need. Featuring beautiful light stone benchtops with a breakfast bar, sleek cabinetry, a walk-in pantry, and top-notch stainless-steel appliances, including a 900mm oven and a dishwasher. Neutral tiling leads to an inviting dining and lounge area, surrounded by expansive windows that flood the space with abundant natural light. Cherish special moments with loved ones in this delightful space. Enjoy year-round outdoor dining in the spacious alfresco, complemented by a low-maintenance backyard with some

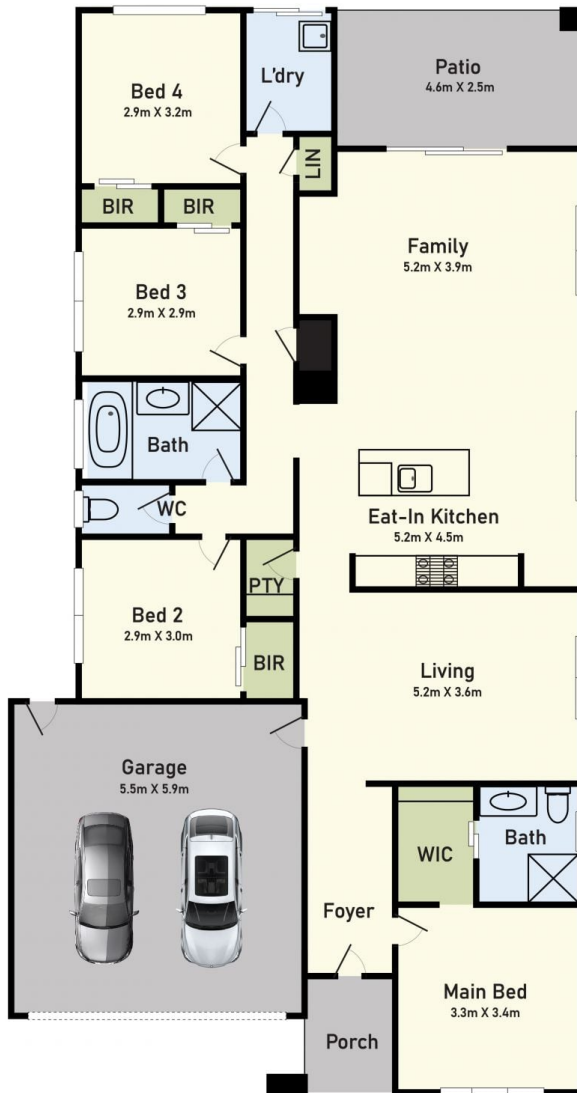


Kamaljeet Singh
0433 619 387

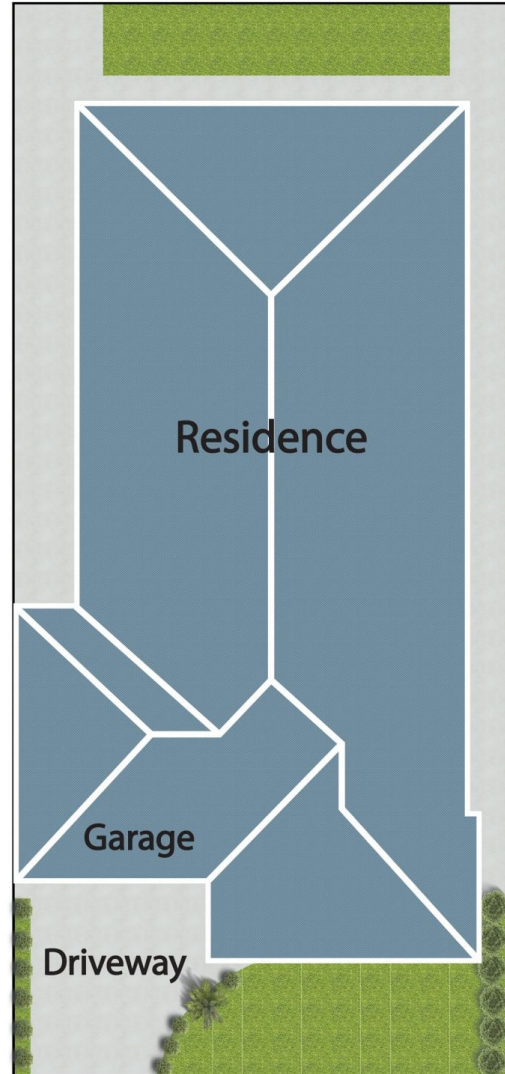


Kanwar Singh
0415 264 895

Floor Plan



Site Plan



14 Bowler Avenue, Clyde, VIC 3978

* Dimensions are approximate and for illustrative purposes only