



9 Mayfin Court Sunbury VIC

3 2 2

Set right near the highly desired and ever so beautiful Spavin Lake in an exclusive court location. This is the perfect home set on approximately 758m², catering to your family's needs for decades. As you step inside, a warm ambience envelops you, accentuated by the grand, luxurious hallway and high ceilings.

This beautiful home boasts three bedrooms, 2 featuring built-in robes. The master bedroom offers luxury with a spacious ensuite and a walk-in robe, providing ample storage space. The second bathroom presents an elegant claw-foot freestanding bathtub. As you enter the expansive open-plan kitchen, living, and dining area, prepare to be captivated. The modern country style kitchen is a chef's dream, complete with a butler's sink, Corian benchtops, a kitchen island trolley, a 900mm gas cooktop, and an ILVE oven. The lounge area features an inviting open fireplace,

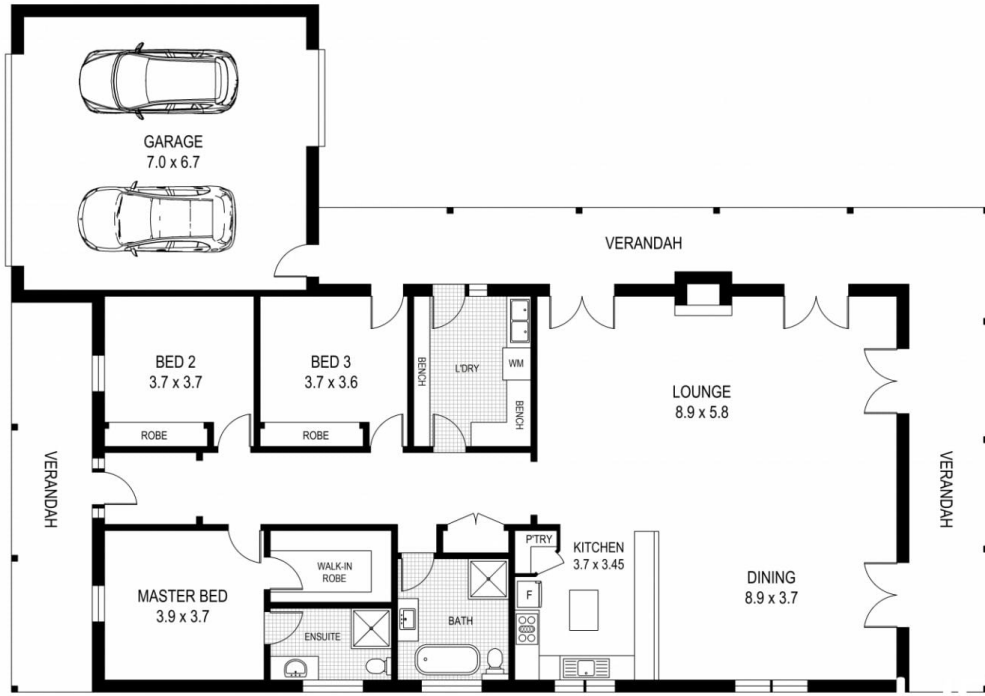
Price : \$ 890,000
Land Size : 758 sqm
View : <https://www.ypa.com.au/7658855>



Patrick Kilkenny
 0401 175 248



Cassandra Doria
 0497 972 028



Disclaimer: All images, views and diagrams are indicative only. Dimensions, areas and landscape are indicative and subject to change without notice. Purchasers should check the plans and specifications included in the terms of the contract of sale carefully prior to signing the contract.