



3/8 Norwich Street Werribee VIC

3  2  3 

Situated in the tightly held South Side location of Werribee within a stone's throw to the best schools Werribee has to offer. Werribee Primary School, Corpus Christi Primary School, MacKillop College and Werribee Secondary College - and just a short walk to Werribee's bustling café, restaurant and shopping precinct and easy access to Freeway to Melbourne or Geelong. This stylish townhouse is immaculately presented through and walk in ready for the next lucky buyer. Offer the following inclusions.

- ? Three bedrooms all with robes
- ? Master bedroom with walk in robe and oversized shower
- ? Open plan living arrangement
- ? Wonderfully appointed kitchen with 900mm oven and cooktop, stainless steel appliances and stone bench tops
- ? Upstairs retreat/study space
- ? Decked outdoor entertaining area overlooking the low maintenance garden

Price : \$ 690,000
Land Size : 184 sqm
View : <https://www.ypa.com.au/7648185>

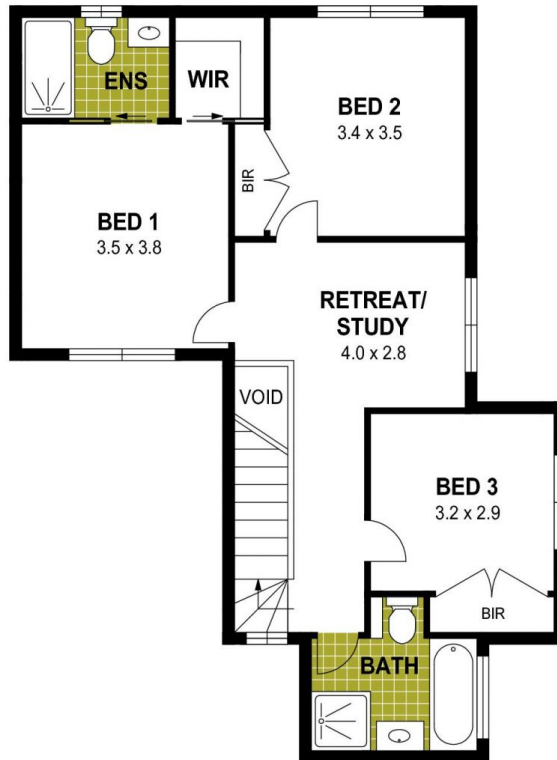


Mitch Smit
0450 913 513

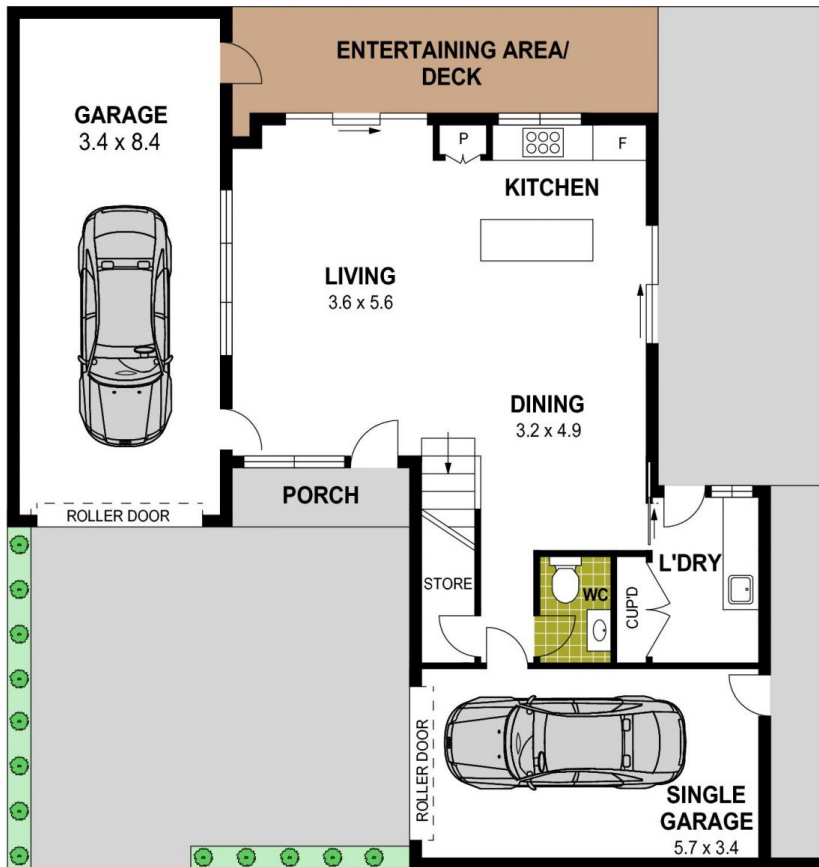


James Christou
0450 733 302

Unit 3/8 Norwich Street, Werribee



FIRST FLOOR



GROUND FLOOR

Disclaimer : Whilst every precaution is taken to ensure information provided regarding this property is highly accurate, the measurements are for guidance only and are not to be used for any other purpose. The agency and creators of this illustration deny responsibility for any omissions or errors contained herein, or for practices carried out with further use of these dimensions. Dimensions are taken from the structural walls in each respective room and will be taken on the longest dimension to maintain uniformity across plans.