

## 14 Langport Crescent Sunbury VIC

4 2 2

Nestled at the foot of Mt Holden on a great size lot of approx. 588m<sup>2</sup> is this ideal opportunity for those wanting low maintenance living with tranquil surrounds, walking trails, local shopping strips, just minutes to the Killara Primary School, all within easy reach of Freeway Arterials, Public Transport as well as all the Sunbury region has to offer.

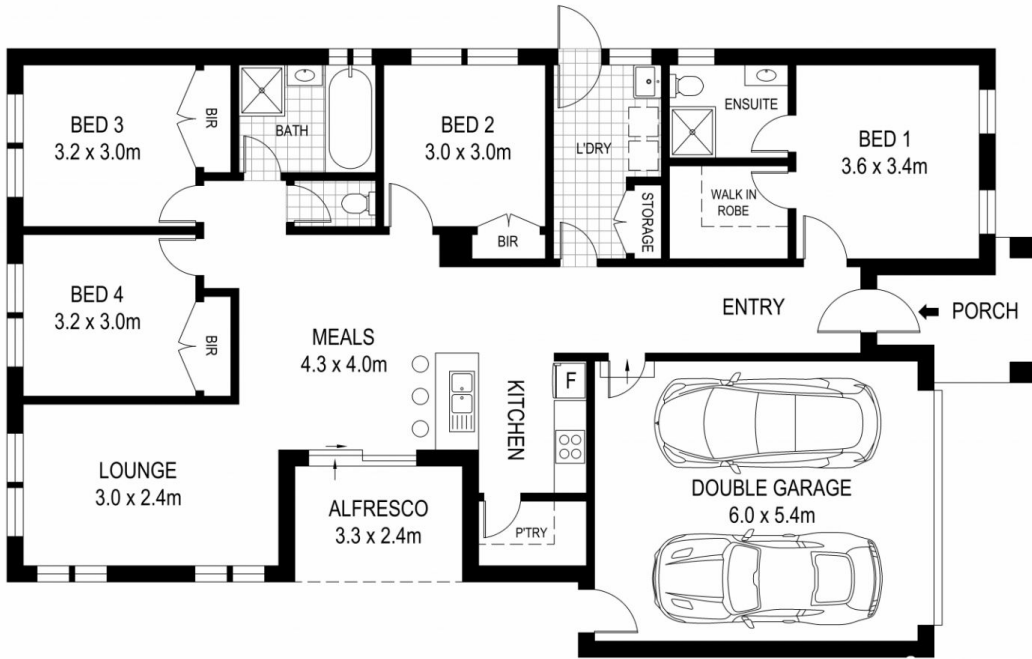
Providing great value for money, the home offers a spacious master bedroom with walk in robe and ensuite, three good size bedrooms with built in robes, a well appointed kitchen with stainless steel appliances and butler's pantry, great size meals area leading out to a private alfresco area ideal for entertaining as well as cosy family room perfect to sit back in and watch your favourite movie.

**Land Size** : 588 sqm

**View** : <https://www.ypa.com.au/7646435>



**Nic Owen**  
0422 107 177



Disclaimer: All images, views and diagrams are indicative only. Dimensions, areas and landscape are indicative and subject to change without notice. Purchasers should check the plans and specifications included in the terms of the contract of sale carefully prior to signing the contract.