



26 Greenwood Street Wyndham Vale VIC

4 2 2

Located in a family friendly location and offering a spacious and flowing floor plan this home is well suited to first home buyers and investors alike. Situated next door to a kid friendly park and within walking distance to so many amenities. You are positioned in a dominant location within walking distance to Iramoo Primary School, Public Transport, Local Shops & Parklands. Situated on approximately 557m2 of land and offering the next lucky owners.

Price : \$ 605,000
Land Size : 557 sqm
View : <https://www.ypa.com.au/7639462>

- ?Facing stunning parkland views
- ?Four spacious bedrooms with built in robes
- ?Master bedroom with ensuite and built in robes
- ?Central bathroom
- ?Spacious L shape living room
- ?Kitchen overlooking the meals area
- ?High end quality kitchen appliances

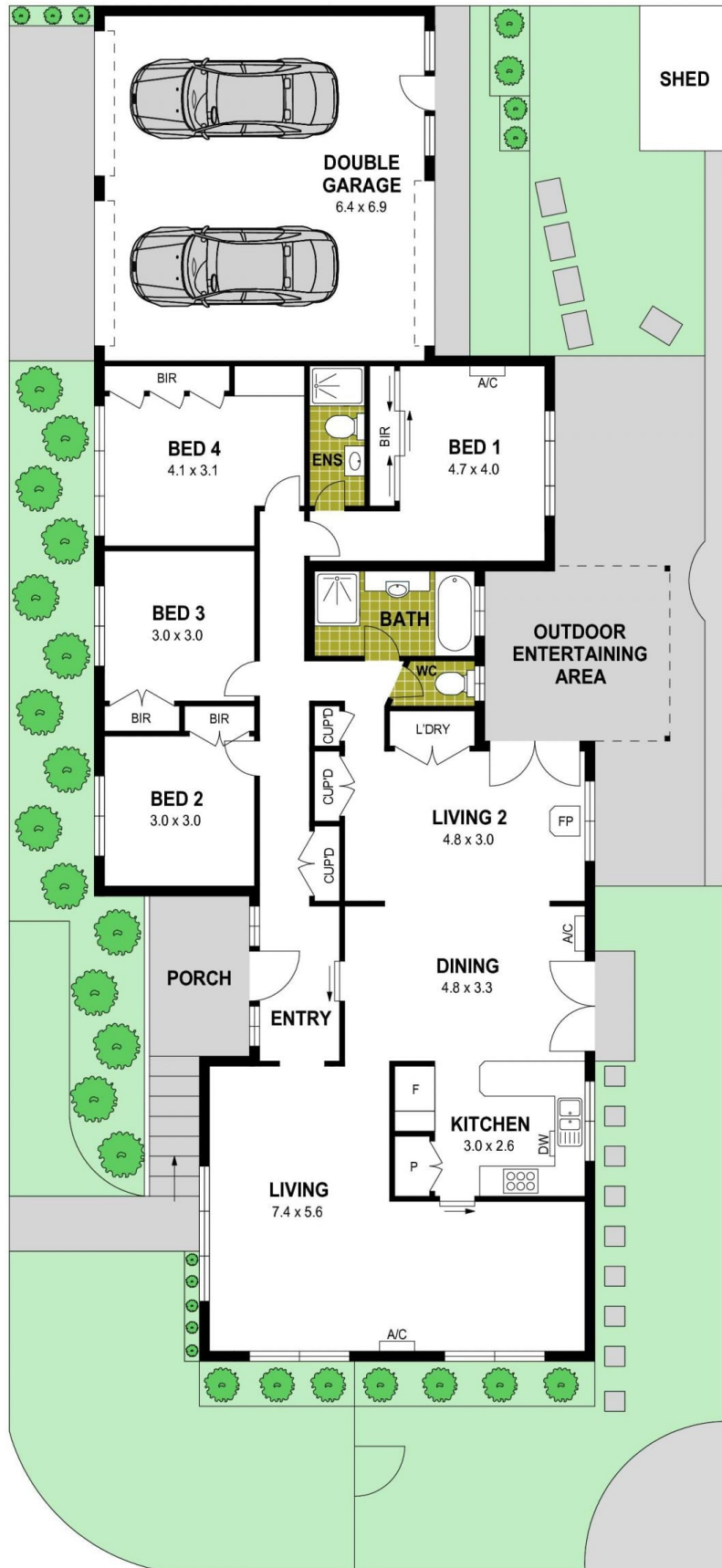


James Christou
 0450 733 302



Mitch Smit
 0450 913 513

26 Greenwood Street, Wyndham Vale



Disclaimer : Whilst every precaution is taken to ensure information provided regarding this property is highly accurate, the measurements are for guidance only and are not to be used for any other purpose. The agency and creators of this illustration deny responsibility for any omissions or errors contained herein, or for practices carried out with further use of these dimensions. Dimensions are taken from the structural walls in each respective room and will be taken on the longest dimension to maintain uniformity across plans.