



13 Chitwan Street Clyde North VIC

4  2  2 

Indulge in the ultimate modern living experience! Immerse yourself in the vibrant Smiths Park Estate of Clyde North, where this newly built 4-bedroom, 2-bathroom gem awaits. With dual living zones, an elegant master bedroom, and a seamless blend of indoor and outdoor spaces, this home redefines everyday luxury.

This impeccably constructed home welcomes you with an open floorplan, creating an atmosphere of spaciousness and warmth. Sunlight shines through expansive windows, bathing every corner with natural light, while a cosy lounge at the front of the home beckons, offering a haven for the kids to play. The modern kitchen is an oasis for culinary inspiration with a stunning white tiled backsplash, light stone countertops, and quality stainless-steel appliances, including a dishwasher. The open-plan lounge and dining area seamlessly connect to the outdoors through

Price : \$ 685,000
Land Size : 336 sqm
View : <https://www.ypa.com.au/7639363>

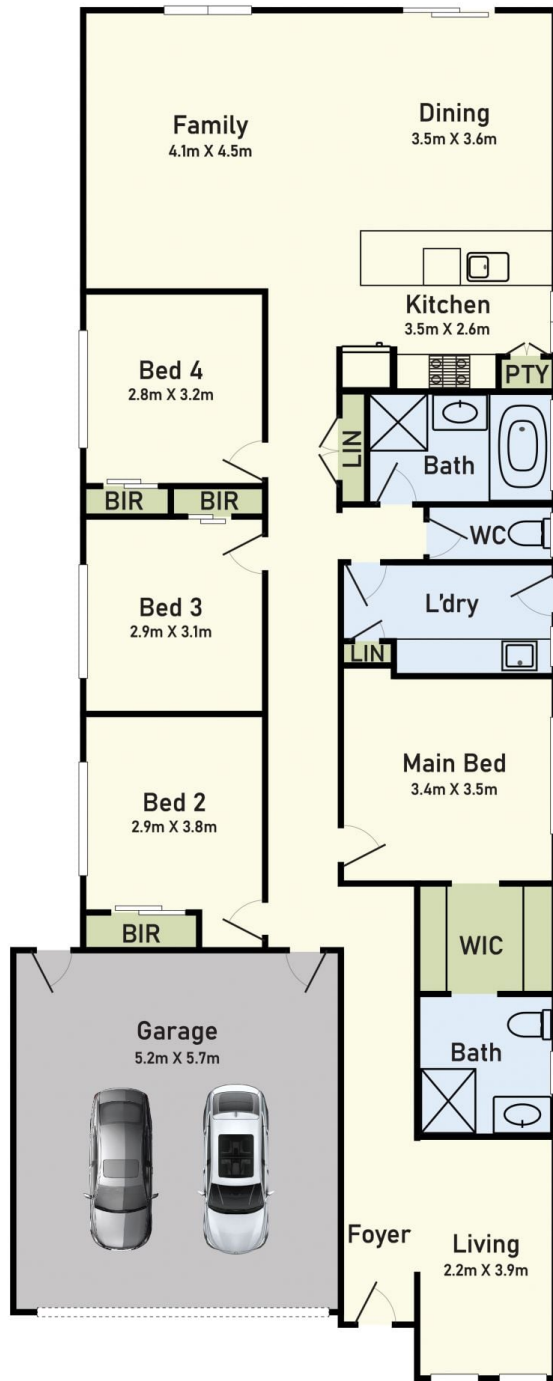


Kamaljeet Singh
0433 619 387

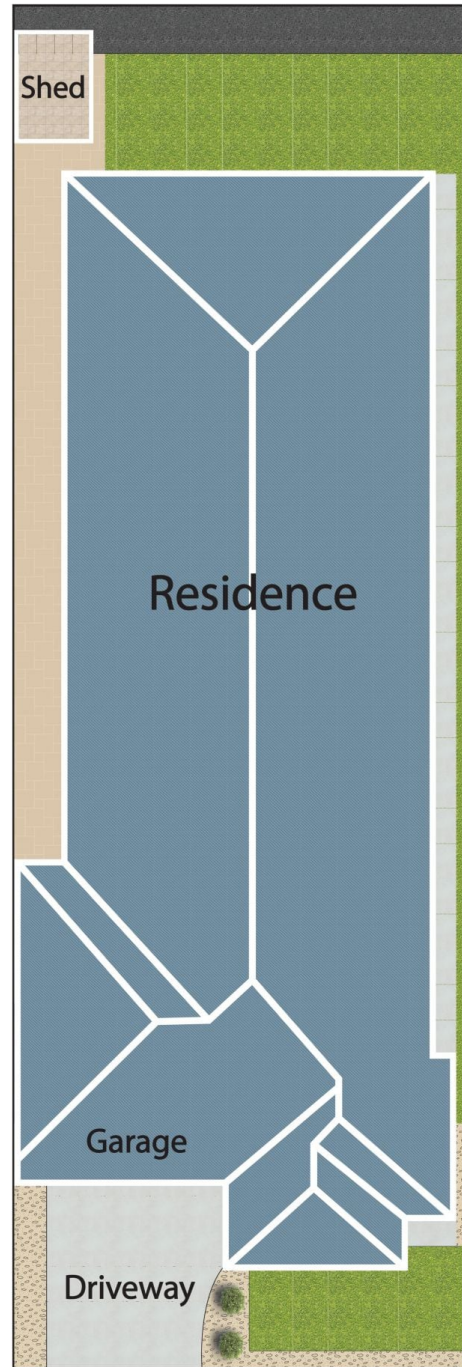


Kanwar Singh
0415 264 895

Floor Plan



Site Plan



13 Chitwan Street, Clyde North, VIC 3978

* Dimensions are approximate and for illustrative purposes only