



5 Hine Court Darley VIC

3 2

This immaculately kept home in a quite court of Darley, has just become available to purchase.

It consists of three bedrooms with master having ensuite and WIR and BIR's to remaining bedrooms.

With a central bathroom having spa, shower and vanity and separate toilet servicing guests and other bedrooms.

The kitchen is spacious and has dishwasher, wall oven and hotplates with ample cupboard storage.

The lounge to the front of home is a good size and views over the park area across the way and with a split system for year round comfort.

Outside is a great sized backyard with it being a blank canvas with plenty of room for a shed, carport, pergola etc? S.T.C.A. also adding to the value is the side access through the double gates for easy access into the back.

The home has been freshly painted throughout and has brand new carpet, it is move in ready so if you are looking

Land Size : 657 sqm

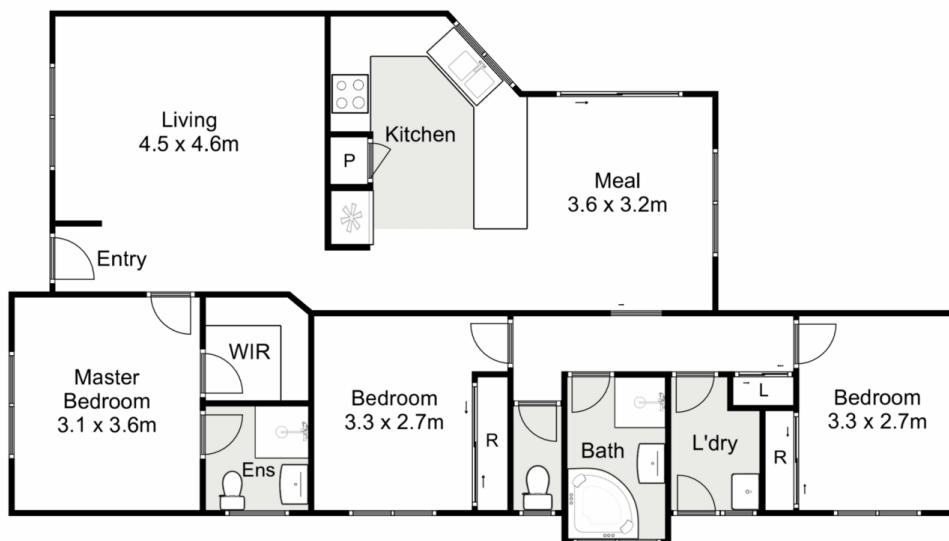
View : <https://www.ypa.com.au/7632720>



Jodi Nash
0419 342 120



Mark Edwards
0422 017 068



5 Hine Court, Darley

Ypa

Whilst every attempt has been made to ensure the accuracy of the floor plan contained here, measurements of doors, windows, rooms and any other items are approximate and no responsibility is taken for any error, omission, or mis-statement. This plan is for illustrative purposes only and should be used as such by any prospective purchaser. The services, systems and appliances shown have not been tested and no guarantee as to their operability or efficiency can be given.

