



58 Darlingsford Boulevard Melton VIC

4 2 2

This stunning home is ideally located in the family friendly Darlingsford Estate in central Melton close by to all amenities including High Street shops, schools, public transport, Botanic Gardens, freeway access and parklands. This amazing location provides a great place for a family, first home or investment.

Upon entering the home there is a spacious formal lounge room which provides ample space for the family to enjoy. The four bedrooms are all generously sized, with the master bedroom featuring a walk in wardrobe and bright modern ensuite.

Moving through to the heart of the home the large kitchen features stainless steel appliances, ample bench space and corner pantry. This overlooks the large dining area and huge living to the rear of the home, perfect to accommodate a growing family.

Moving outside the huge yard provides a great amount of

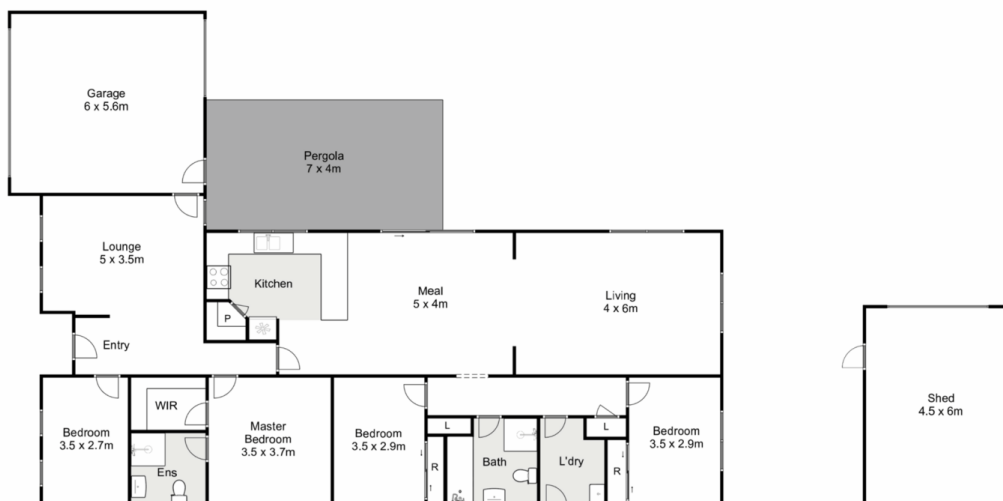
Price : \$ 625,000

Land Size : 675 sqm

View : <https://www.ypa.com.au/7609201>



Kate McGlone
0401 853 244



58 Darlingsford Boulevard, Melton

YPA

Whilst every attempt has been made to ensure the accuracy of the floor plan contained here, measurements of doors, windows, rooms and any other items are approximate and no responsibility is taken for any error, omission, or mis-statement. This plan is for illustrative purposes only and should be used as such by any prospective purchaser. The services, systems and appliances shown have not been tested and no guarantee as to their operability or efficiency can be given.

