



18 Clematis Court Rye VIC

4 🏠 2 🚗 2 🚗

Escape to a world of tranquillity and natural beauty with this exceptional private home nestled on over half an acre of prime land.

Located just 850*m to the entrance of Number 16 Beach and offering an unparalleled lifestyle opportunity, this beautiful residence combines the allure of coastal living with the space and privacy you desire.

Boasting four large bedrooms, two bathrooms and two generous living areas across two independent spaces, this unique property offers the rare and highly sought after opportunity for dual living or Airbnb investment. The main home incorporates three bedrooms, one family bathroom and an open plan living and family room, whilst the self-contained one bedroom cottage (under the same roof line) offers an additional kitchen, bathroom, and living /

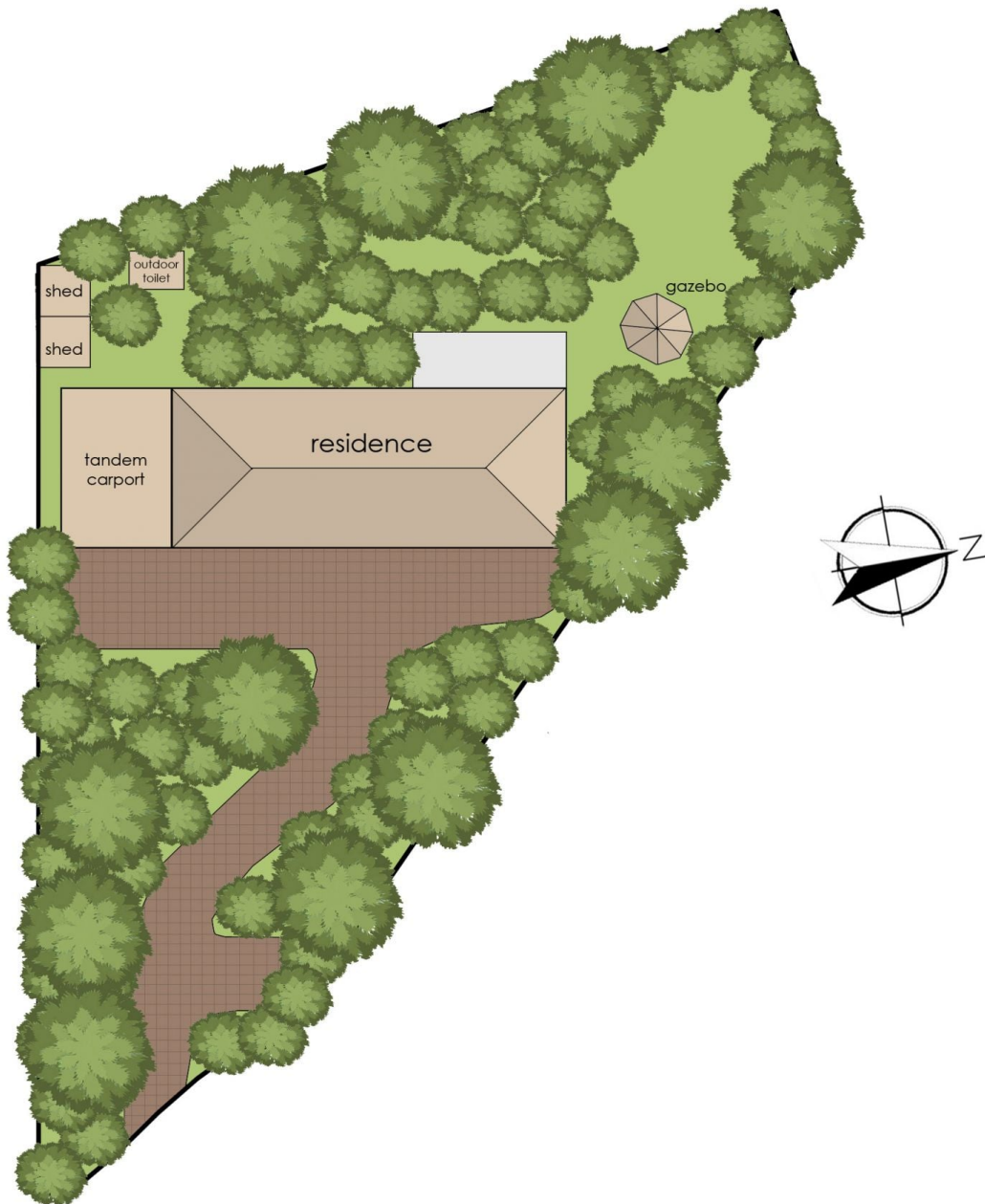
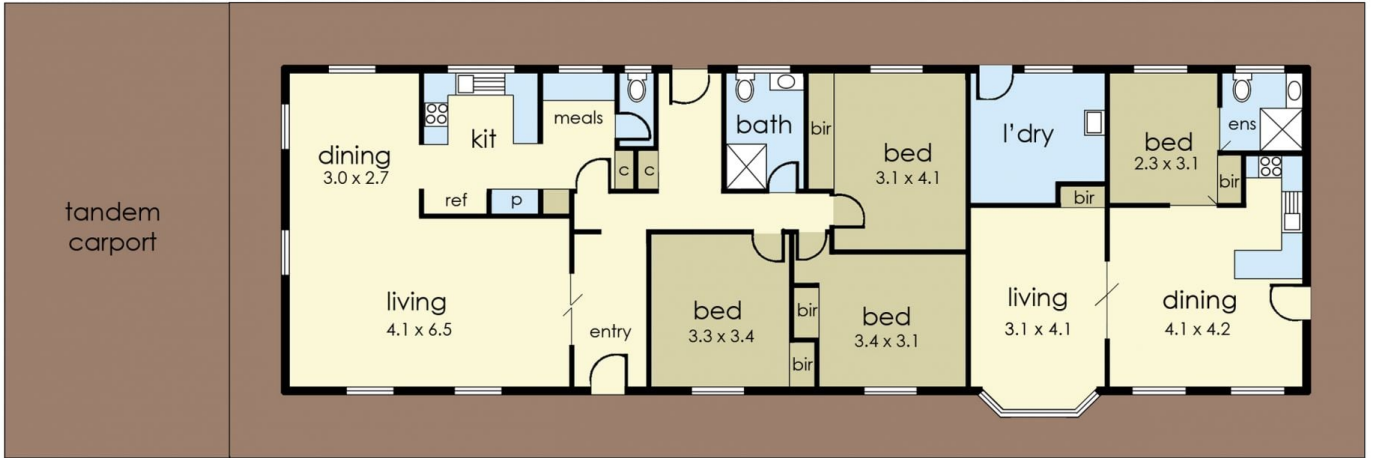
Price : \$ 1,205,000
Land Size : 2273 sqm
View : <https://www.ypa.com.au/7597778>



Tony Talarico
0420 778 401



Jade Springer
0437 410 791



18 Clematis Court, Rye

This floorplan is for illustration purposes only and no warranty is given to its accuracy. Purchasers are advised to carry out their own investigations.