



1/30 Bourke Road Melton South VIC

3  **2**  **1** 

Displaying an impressive blend of captivating modern features and contemporary style, this home makes for a sensational low maintenance domain, whether it be a first home, downsize or an investment. Located within close proximity to all levels of schooling, parks, freeway access, Melton Train Station and Melton South shopping precinct, the location of this home is highly sought after.

Upon entry you are greeted by beautiful floorboards, 9ft ceilings and an open study area. Located off the hallway are three generously sized bedrooms featuring built in robes with the master bedroom featuring his and hers wardrobes and a beautiful ensuite whilst the remaining bedrooms are serviced by a stunning central bathroom.

Continuing through into the heart of the home you are greeted by the outstanding kitchen featuring stainless-steel

Price : \$ 495,000

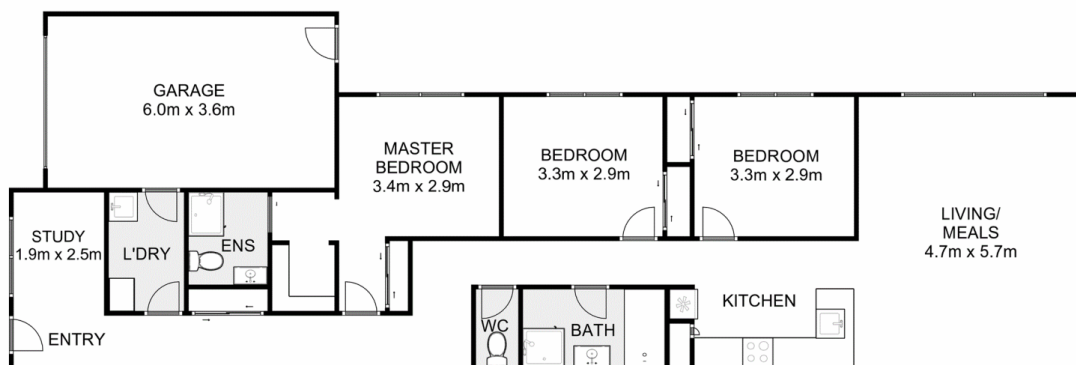
View : <https://www.ypa.com.au/7595033>



Ryan Anders
0434 900 300



Mark Edwards
0422 017 068



Bourke Road, Melton South

YPA

Whilst every attempt has been made to ensure the accuracy of the floor plan contained here, measurements of doors, windows, rooms and any other items are approximate and no responsibility is taken for any error, omission, or mis-statement. This plan is for illustrative purposes only and should be used as such by any prospective purchaser. The services, systems and appliances shown have not been tested and no guarantee as to their operability or efficiency can be given.

