



22 Edina Court Blairgowrie VIC

3  1  2 

GRAND OPEN THIS SATURDAY 3RD JUNE AT 2.00 PM

Occupying a sought after corner allotment within the prestigious neighbourhood of Blairgowrie, this wonderful beachside property represents a rare and exciting opportunity to secure a fantastic property in one of the most coveted postcodes in Victoria.

Offering substantial scope for future capital return, there is an immediate opportunity to update both the interiors and external façade by way of a modern renovation; or simply enjoy the property as a weekend escape or blue-chip investment with an excellent return.

Presenting a functional floor plan, the home occupies a generous allotment of approximately 552*m2 and is comprised of three good sized bedrooms, one family

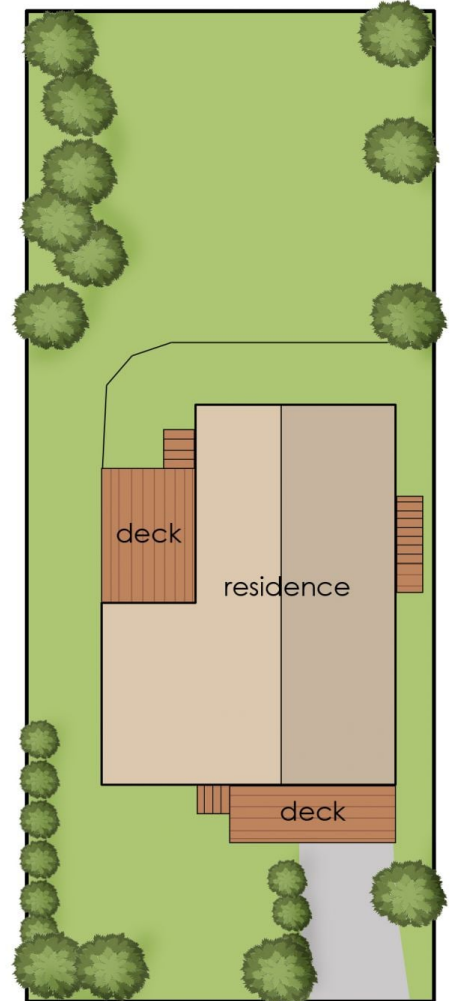
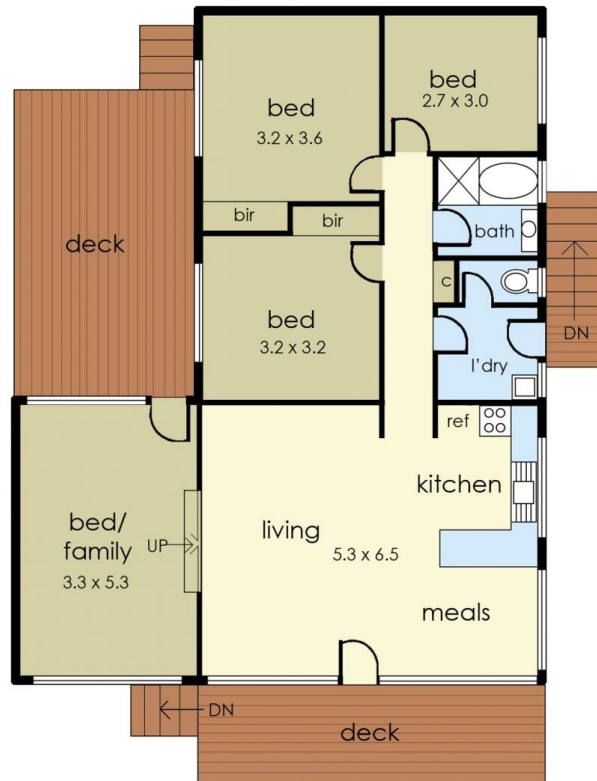
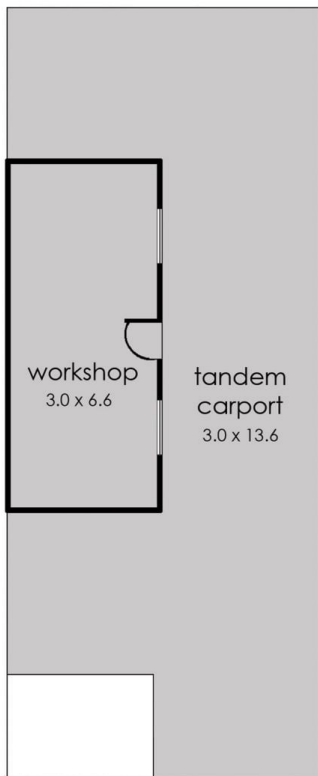
Price : \$ 1,085,000
Land Size : 552 sqm
View : <https://www.ypa.com.au/7587795>



Tony Talarico
0420 778 401



Katrina Talarico
0420 778 404



22 Edina Court, Blairgowrie

This floorplan is for illustration purposes only and no warranty is given to its accuracy. Purchasers are advised to carry out their own investigations.