



32 Kyeamba Circuit Bacchus Marsh VIC

4 2 2

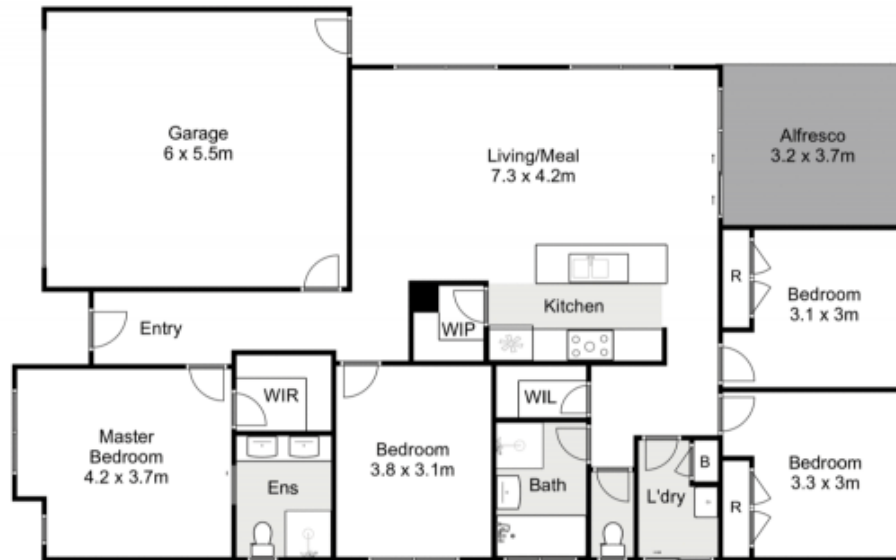
This almost new home is a great opportunity for those looking to move into a beautifully built property without the hassle of building from scratch. Built by Mimosa, this home is filled with quality upgrades and is located in the sought-after Underbank Estate. With views all around and close proximity to schools, supermarkets, and river walking tracks, the location is ideal.

The home features four bedrooms, with the master bedroom boasting an ensuite and walk-in robe. The remaining bedrooms are serviced by a centrally located bathroom. The state-of-the-art kitchen is a highlight, showcasing 40mm stone benchtops with waterfall ends, feature pendant lighting, overhead cupboards, a walk-in pantry, and 900mm stainless steel appliances including a dishwasher. The kitchen seamlessly overlooks the living and dining room, which is flooded with natural light.

Price : \$ 640,000
Land Size : 400 sqm
View : <https://www.ypa.com.au/7581713>



Jodi Nash
0419 342 120



32 Kyeamba Circuit, Bacchus Marsh



Whilst every attempt has been made to ensure the accuracy of the floor plan contained here, measurements of doors, windows, rooms and any other items are approximate and no responsibility is taken for any error, omission, or mis-statement. This plan is for illustrative purposes only and should be used as such by any prospective purchaser. The services, systems and appliances shown have not been tested and no guarantee as to their operability or efficiency can be given.

