



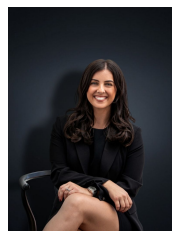
14 Debut Avenue Tarneit VIC

4 2 2

This stunning once in a lifetime opportunity is sure to impress with a long list of features and simply not a thing to be done. Built by Sheridan Homes in a booming location within 4km to Tarneit Train Station & Tarneit Central Shopping Centre & positioned on approximately 392 sq m offers:

Price : \$ 750,000
Land Size : 392 sqm
View : <https://www.ypa.com.au/7575897>

- ? Four spacious bedrooms
- ? Master with walk in robe and ensuite
- ? Kitchen/Meals & Family living arrangement
- ? Kitchen boasts quality stainless steel appliances including dishwasher and 900mm upright stove, WIP, loads of cupboard space, stone benchtops & tiled splashback
- ? Ducted heating & Refrigerated Cooling
- ? Double garage
- ? Decked Alfresco and manicured gardens front & back with exposed aggregate driveway

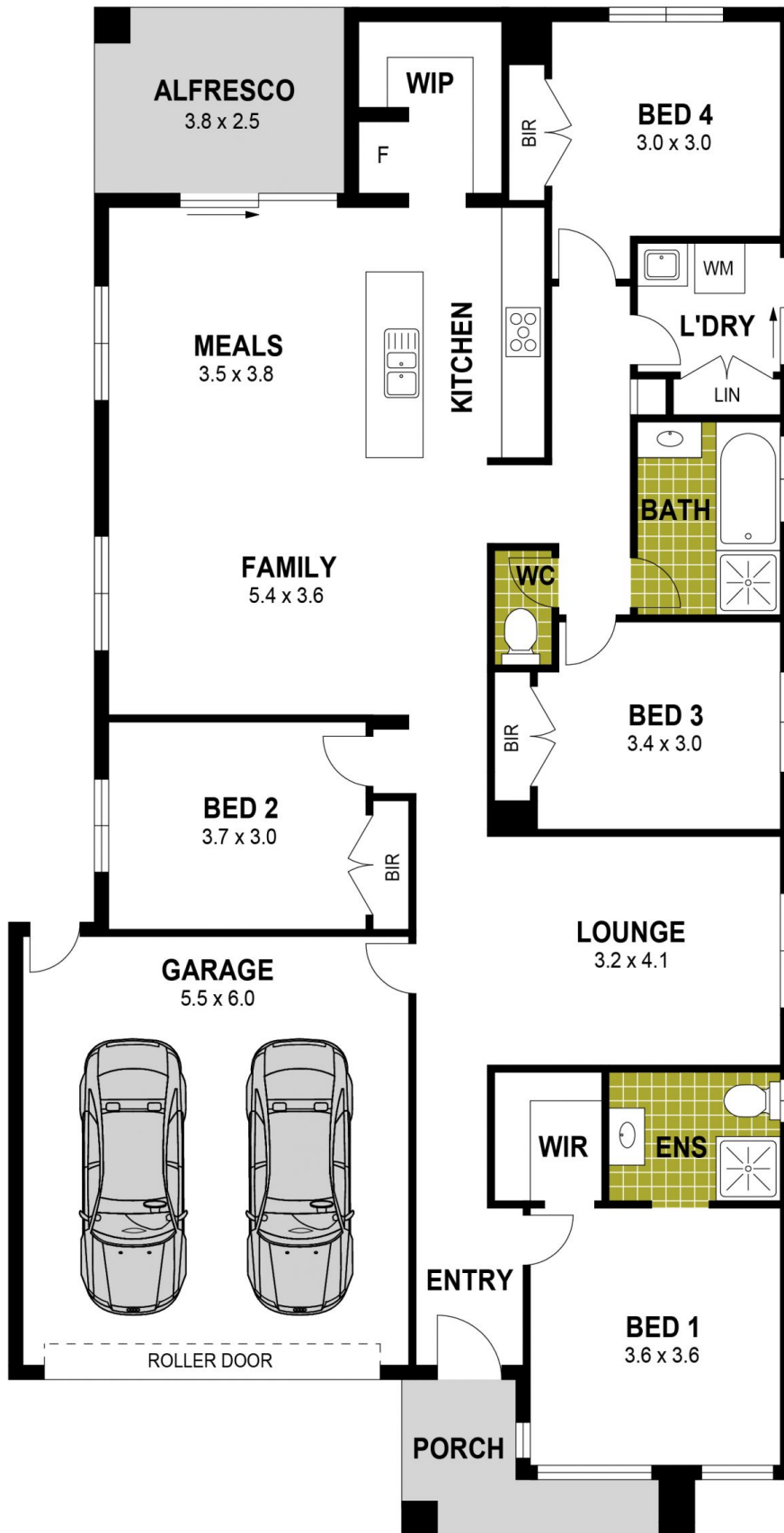


Kirsty Cunningham
0414 344 475



Kiarah Bagnato
0449 941 895

14 Debut Drive, Tarneit



Disclaimer : Whilst every precaution is taken to ensure information provided regarding this property is highly accurate, the measurements are for guidance only and are not to be used for any other purpose. The agency and creators of this illustration deny responsibility for any omissions or errors contained herein, or for practices carried out with further use of these dimensions. Dimensions are taken from the structural walls in each respective room and will be taken on the longest dimension to maintain uniformity across plans.