



## 1/56 Chester Crescent DEER PARK VIC

3 1 2

Situated in a coveted pocket of Deer Park, this stylishly well-kept home will inspire. The bright interior features high ceilings, timber floors, 3 good-sized bedrooms with built in wardrobes and a bright family bathroom, whilst a light-filled living/dining zone adjoins a stunning kitchen and an easy-to-maintain backyard.

Located only a 2 minute walk to bus stop or 1 min drive to Brimbank shopping center. The property is also zoned for Burnside Primary School and Victoria University Secondary College. Features central ducted heating, split system cooling, solar panels, large carport and ample storage.

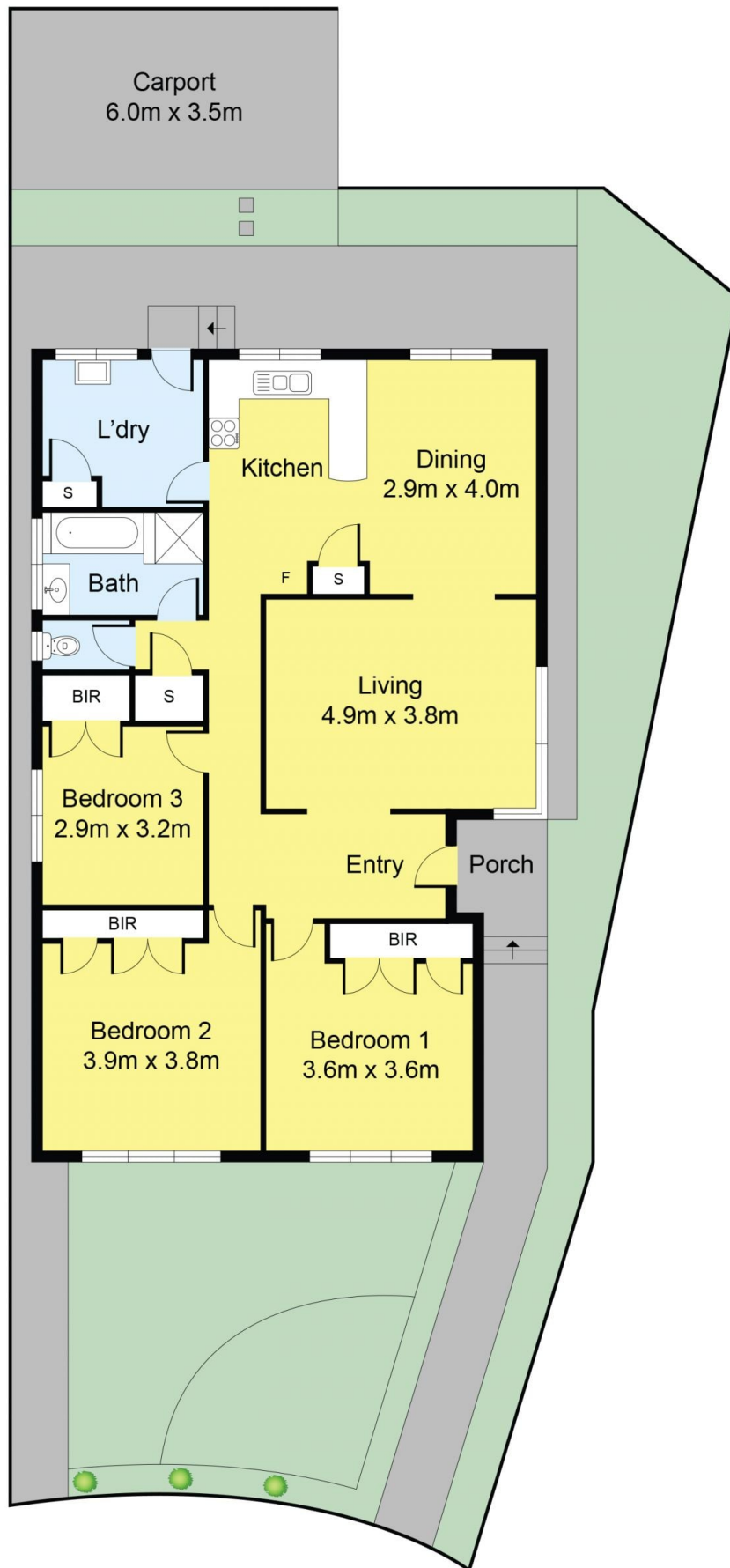
**Price** : \$ 470,000  
**Land Size** : 289 sqm  
**View** : <https://www.ypa.com.au/7574261>



**Andy Nguyen**  
0426821593



**Hugh Huynh**  
0434848987



Disclaimer: Whilst we believe the contents of this document to be accurate, we suggest the prospective purchasers make any necessary enquiries to satisfy themselves. All measurements are approximate. We do not accept responsibility for any errors or omissions.

## 1/56 Chester Crescent, Deer Park

