

20 Todd Court Darley VIC

3 1 2

Exceptionally well presented home positioned in a quite court location.

The home offers three bedrooms, all having built in robes and dual way bathroom to the master.

Spacious light filled kitchen overlooking the yard and includes gas cook top, range hood, wall oven and dishwasher. Separate lounge with glass double doors to close off from kitchen/meals area which has quality blinds, ceiling fans and a wall air conditioner.

Large undercover entertainment area, looking over the fernery area and a double semi enclosed carport with remote access. Well sized and established front and back yard with garden shed, this home would suit many different needs and is ready to move straight in. Call me today to arrange your inspection.

Price : \$ 515,000

Land Size : 653 sqm

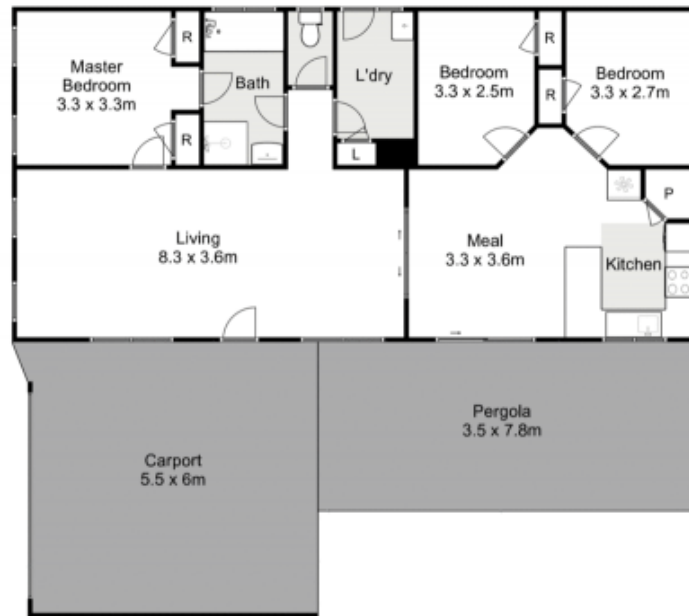
View : <https://www.ypa.com.au/7573906>



Vickie Ramon
0403 194 621



Lee Teuma
0411 383 533



20 Todd Court, Darley



Whilst every attempt has been made to ensure the accuracy of the floor plan contained here, measurements of doors, windows, rooms and any other items are approximate and no responsibility is taken for any error, omission, or mis-statement. This plan is for illustrative purposes only and should be used as such by any prospective purchaser. The services, systems and appliances shown have not been tested and no guarantee as to their operability or efficiency can be given.

