



9 Opal Street Cobblebank VIC

4 2 2

Situated in the heart of Cobblebank and close by to Strathtulloh Primary School, Cobblebank Train Station, Cobblebank Athletics Track, Cobblebank Village and the future Melton Hospital this great home is perfect for any savvy buyer looking for their first home, investment or downsize.

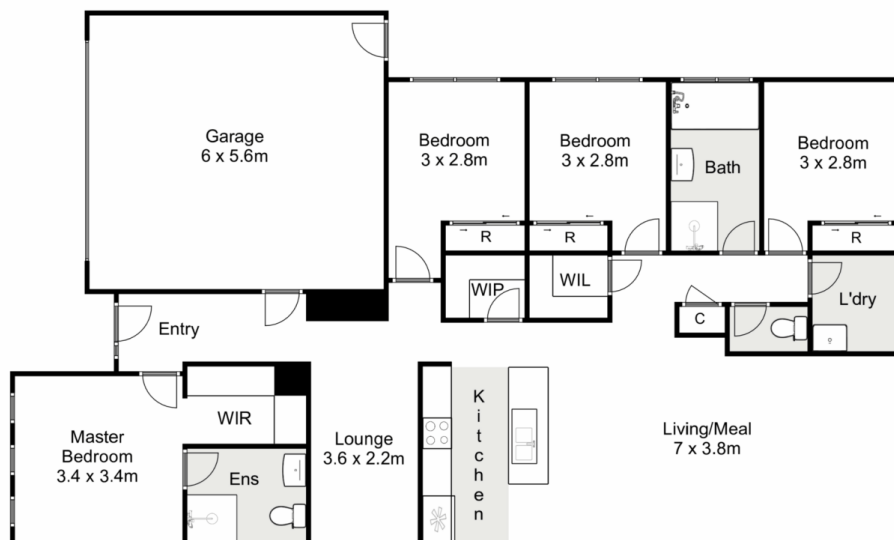
Upon entry to this property you are greeted by a bright and airy feel from the neutral colour palette, and modern finishes. At the front of this great floorplan, you are greeted by the master bedroom complete with walk in robe and bright ensuite, the remaining three bedrooms all have built in robes and are serviced by a stunning central bathroom.

Moving through the home you are met with a formal lounge, perfect for a kid's playroom or a sitting room to unwind at the end of the day. This is further accompanied

Price : \$ 585,000
Land Size : 350 sqm
View : <https://www.ypa.com.au/7569407>



Ricky Frew
0402 007 100



9 Opal Street, Cobblebank

ypa

Whilst every attempt has been made to ensure the accuracy of the floor plan contained here, measurements of doors, windows, rooms and any other items are approximate and no responsibility is taken for any error, omission, or mis-statement. This plan is for illustrative purposes only and should be used as such by any prospective purchaser. The services, systems and appliances shown have not been tested and no guarantee as to their operability or efficiency can be given.

