



23 Hollywood Drive Roxburgh Park VIC

3 2 2

This complete turn-key build has taken no shortcuts, boasting sizeable living, dining and resting zones as well as a modern and airy feel as soon as you enter the front door.

Not to mention positioning you in a top locale- with all amenities at your doorstep, as the brand new 'Roxy Central' shopping complex has plenty to offer including shopping, dining, leisure, medical and more. As well as public transport (280m) and schools (1km) a short walk away.

Offering on Level 1:

- ?Master bedroom with large walk-in wardrobe and ensuite
- ?Additional two bedrooms with built in wardrobes
- ?Serviced by a spotless central bathroom with stone benches

Price : \$ 513,000

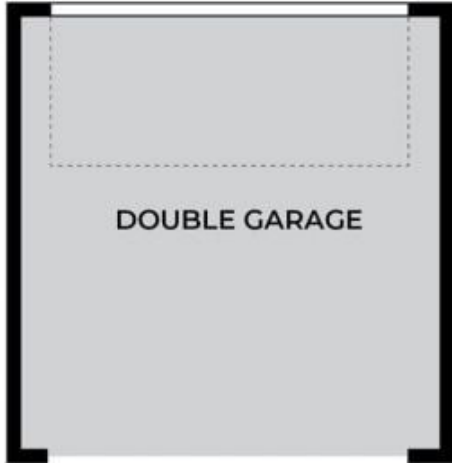
View : <https://www.ypa.com.au/7569134>



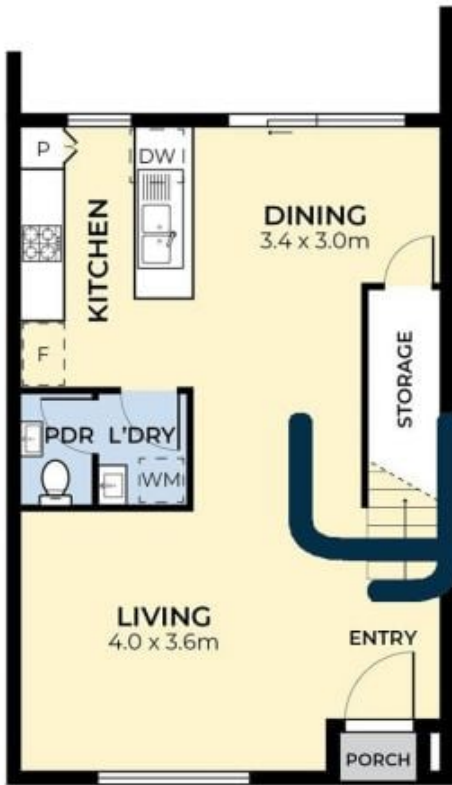
Melissa Abela
0405 264 150



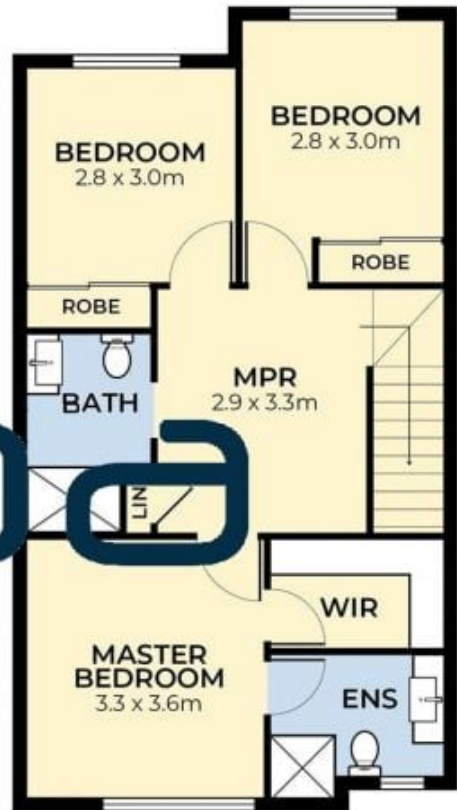
Amin Halabi
0401 789 004



GROUND FLOOR



FIRST FLOOR



UP