

21 Odin Walk Melton South VIC

3 2 2

Displaying an impressive blend of captivating modern features and contemporary style, this home makes for a sensational low maintenance domain, whether it be a first home, downsize or an investment. Located directly in front of Orchid Green Reserve and within close proximity to all levels of schooling, parks, freeway access, Melton Train Station and Melton South shopping precinct, the location of this home is highly sought after.

Upon entry you are met with soaring ceilings and an inviting colour pallet. The front living area offers a great space for your family to enjoy overlooking the gorgeous parklands right outside your door.

Continuing through, the open plan living and dining areas seamlessly incorporate the stunning kitchen which features stone bench tops, 900mm gas cooktop, large wall oven, dishwasher and ample bench and cupboard space.

The home comprises of three generously sized bedrooms

Price : \$ 515,000

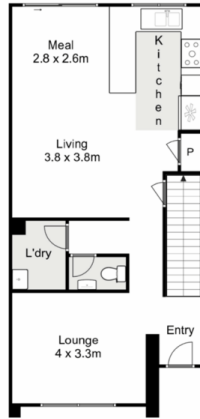
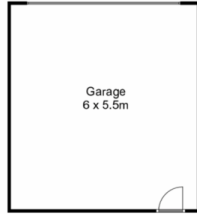
View : <https://www.ypa.com.au/7562610>



Maddison Paans
0433 239 783



Junior MuBashar
0450 644 606



Ground Floor



First Floor

21 Odin Walk, Melton South

YPA

Whilst every attempt has been made to ensure the accuracy of the floor plan contained here, measurements of doors, windows, rooms and any other items are approximate and no responsibility is taken for any error, omission, or mis-statement. This plan is for illustrative purposes only and should be used as such by any prospective purchaser. The services, systems and appliances shown have not been tested and no guarantee as to their operability or efficiency can be given.

