



## 75 Waterbird Circuit Weir Views VIC

4 2 2

Situated in one of the most desirable locations of the Weir Views and within walking distance to bus stops, Opalia Shopping Centre and a short drive to schools of all levels, Melton South Train Station, Cobblebank Train Station and so much more. This wonderfully presented home has so much luxury upgrades and is ready for you to move straight in.

Entering this gorgeous home, you will be amazed by the formal lounge room at the front of the home. Moving to the heart of this sensational family domain, the stunning modern kitchen featuring; upgraded 40m stone bench tops including a massive island bench, 900mm stainless steel appliances, generous walk-in pantry with pleasing views over the large open plan living/dining area.

Moving through the hallway you are greeted by a two of three secondary bedrooms all with built in robes and are

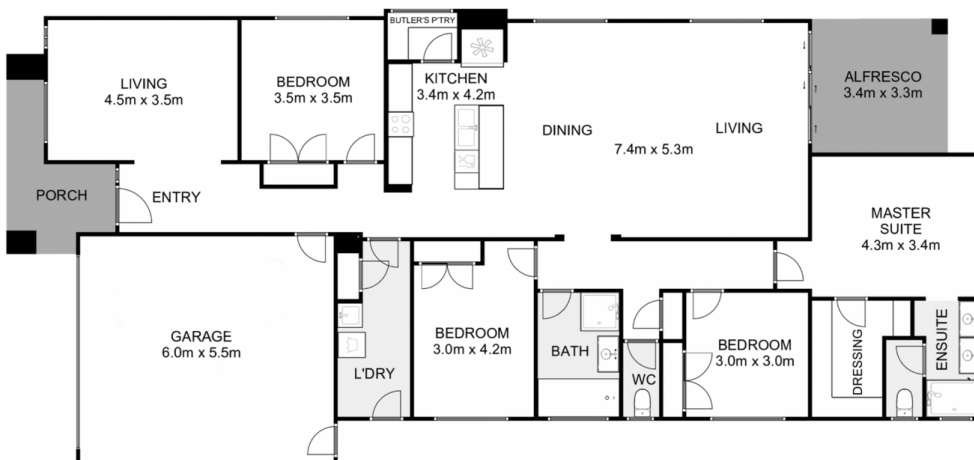
**Price** : \$ 666,000  
**Land Size** : 400 sqm  
**View** : <https://www.ypa.com.au/7562350>



**Ryan Anders**  
0434 900 300



**Ricky Frew**  
0402 007 100



## 75 Waterbird Circuit, Weir Views

YPA

Whilst every attempt has been made to ensure the accuracy of the floor plan contained here, measurements of doors, windows, rooms and any other items are approximate and no responsibility is taken for any error, omission, or mis-statement. This plan is for illustrative purposes only and should be used as such by any prospective purchaser. The services, systems and appliances shown have not been tested and no guarantee as to their operability or efficiency can be given.

