



## 11 Sanctum Drive Weir Views VIC

4 2 2

This exciting piece of modern day architecture, positioned in a highly sought-after new pocket of Weir Views with upcoming shopping complexes, schools and parklands, this brand new home is to be completed to the definition of luxury with deluxe inclusions and upgrades, this stunning build is a must see due to the detail and quality throughout.

This wonderful home comprises of four bedrooms all with built in robes, feature master bedroom equipped with full walk in robe, built in make-up station and ensuite finished with deluxe builders upgrades such as floor to ceiling tiles, stone benches, an inbuilt wall niche in the shower and upgraded fixtures. While the main bathroom that services the remaining three bedrooms boasts similar upgrades with additional wall mounted bath.

The well-designed open modern kitchen comes equipped

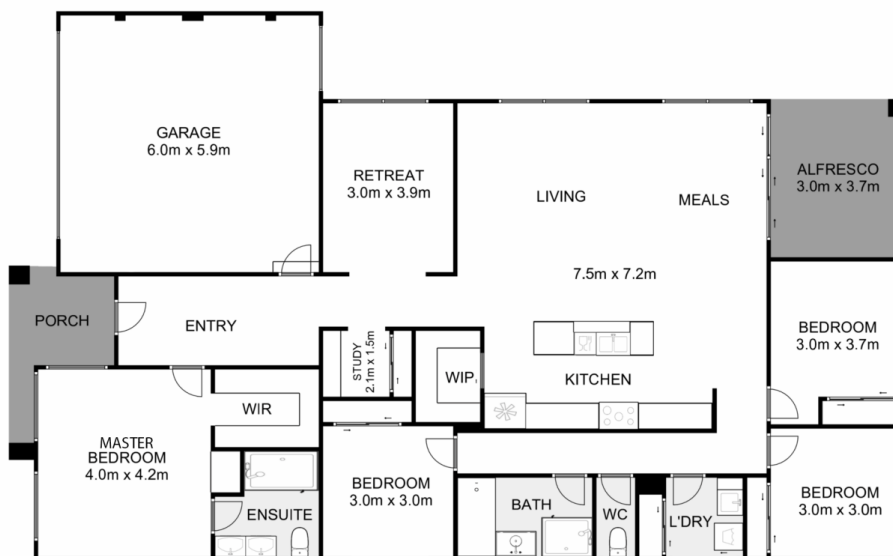
**Price** : \$ 710,000  
**Land Size** : 420 sqm  
**View** : <https://www.ypa.com.au/7562147>



**Ryan Anders**  
0434 900 300



**Monty Tyagi**  
0435 896 907



## 11 Sanctum Drive, Weir Views

ypa

Whilst every attempt has been made to ensure the accuracy of the floor plan contained here, measurements of doors, windows, rooms and any other items are approximate and no responsibility is taken for any error, omission, or mis-statement. This plan is for illustrative purposes only and should be used as such by any prospective purchaser. The services, systems and appliances shown have not been tested and no guarantee as to their operability or efficiency can be given.

