

## 21 Desert Gum Way Brookfield VIC

4 2 2

Tucked away on a highly sought-after picturesque tree lined street in Brookfield, this absolutely stunning family home will tick all of your boxes. Providing a rare and unique opportunity to grasp what Brookfield has to offer, take advantage of this prime piece of real estate today. Within close proximity to local shopping complexes, schools of all levels, parks, leisure centre, public transport, freeway access and so much more.

Upon entry you will be amazed at the quality on offer from high ceilings to the free-flowing floorplan. The large living area at the front of the home provides an amazing space for your family with feature wall paper adding to the glamorous ambiance of the home. The grand master bedroom has an abundance of space and features a walk-in, his and hers robe and a gorgeous ensuite including a double vanity, larger shower and ample storage.

The large kitchen includes 40mm stone island bench top

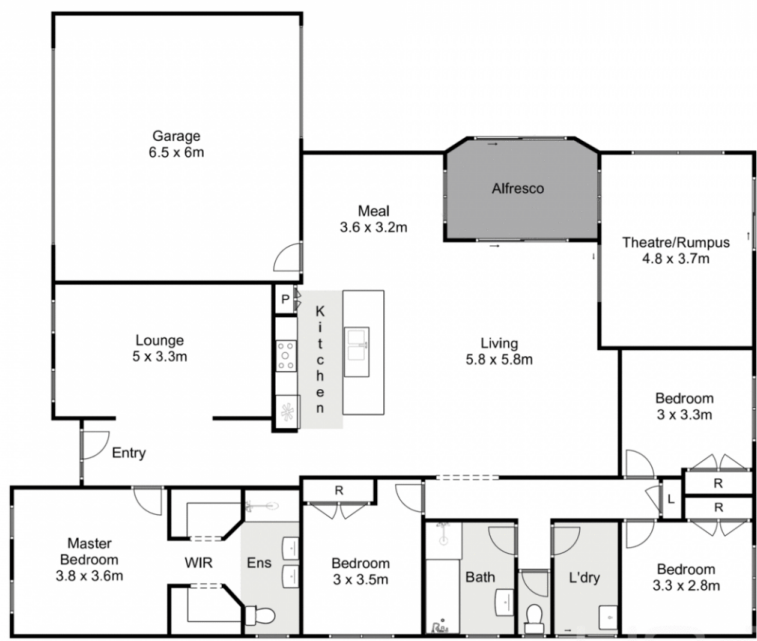
**Price** : \$ 655,000  
**Land Size** : 612 sqm  
**View** : <https://www.ypa.com.au/7555060>



**Shane Spiteri**  
0488 980 115



**Monty Tyagi**  
0435 896 907



## 21 Desert Gum Way, Brookfield

Whilst every attempt has been made to ensure the accuracy of the floor plan contained here, measurements of doors, windows, rooms and any other items are approximate and no responsibility is taken for any error, omission, or mis-statement. This plan is for illustrative purposes only and should be used as such by any prospective purchaser. The services, systems and appliances shown have not been tested and no guarantee as to their operability or efficiency can be given.

