

248 Morris Road Hoppers Crossing VIC

3  2  2 

Upon laying your eyes on this gorgeous home you'll feel the presence from the streetscape offering ultra-modern design for one lucky family looking to buy in a forever popular location.

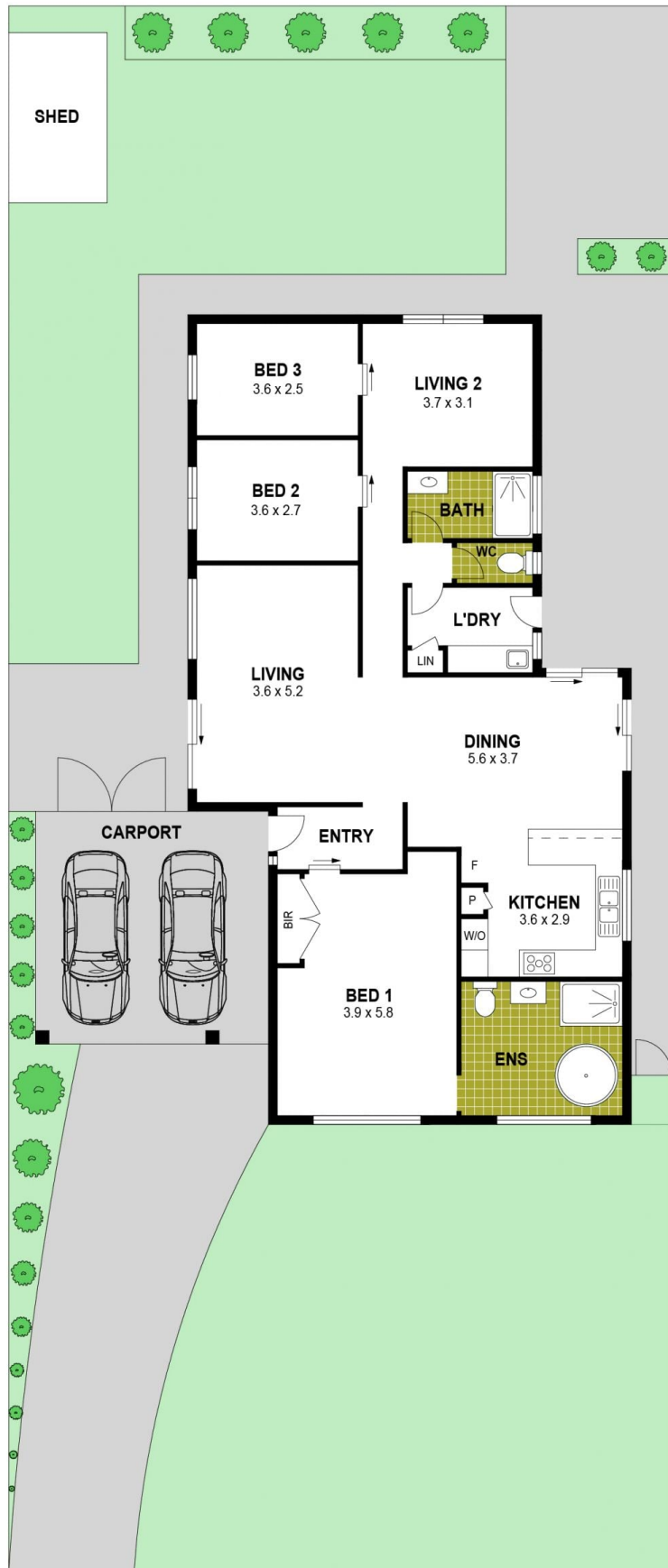
The internal floorplan is well highlighted by a home that offers a turnkey product from the moment you walk through. At the entrance, you'll be welcomed by the beautiful porcelain tiles that lead you to the master en-suite which is oversized with one the largest en-suites you'll see on the market. Following the floorplan you'll enter the heart of the home, which is the oversized lounge adjacent to the separate dining and kitchen area. The kitchen is equipped with brand-new appliances for you to ultimately enjoy immediately with unlimited bench space and storage to start enjoying the luxuries this home has to offer.

Price : \$ 630,000
Land Size : 585 sqm
View : <https://www.ypa.com.au/7543902>



Abdul Merabi
0424 263 506

248 Morris Road, Hoppers Crossing



Disclaimer : Whilst every precaution is taken to ensure information provided regarding this property is highly accurate, the measurements are for guidance only and are not to be used for any other purpose. The agency and creators of this illustration deny responsibility for any omissions or errors contained herein, or for practices carried out with further use of these dimensions. Dimensions are taken from the structural walls in each respective room and will be taken on the longest dimension to maintain uniformity across plans.