



2/25 Black Street Westmeadows VIC

3  1  1 

The real selling point of this modern townhouse is its excellent location. But not only location ... a captivating front appeal, set in a desirable tree-lined location, free of front neighbours, providing beautiful and serene parkland views that will definitely impress.

This contemporary designed and impeccably presented home with NO owner's corporation fees, delivers practical liveability with low-maintenance, landscaped gardens, allowing for the perfect lock-up-and-leave lifestyle, offering appealing rewards for first home buyer, young couple/family or investor, that will only grow in value over time.

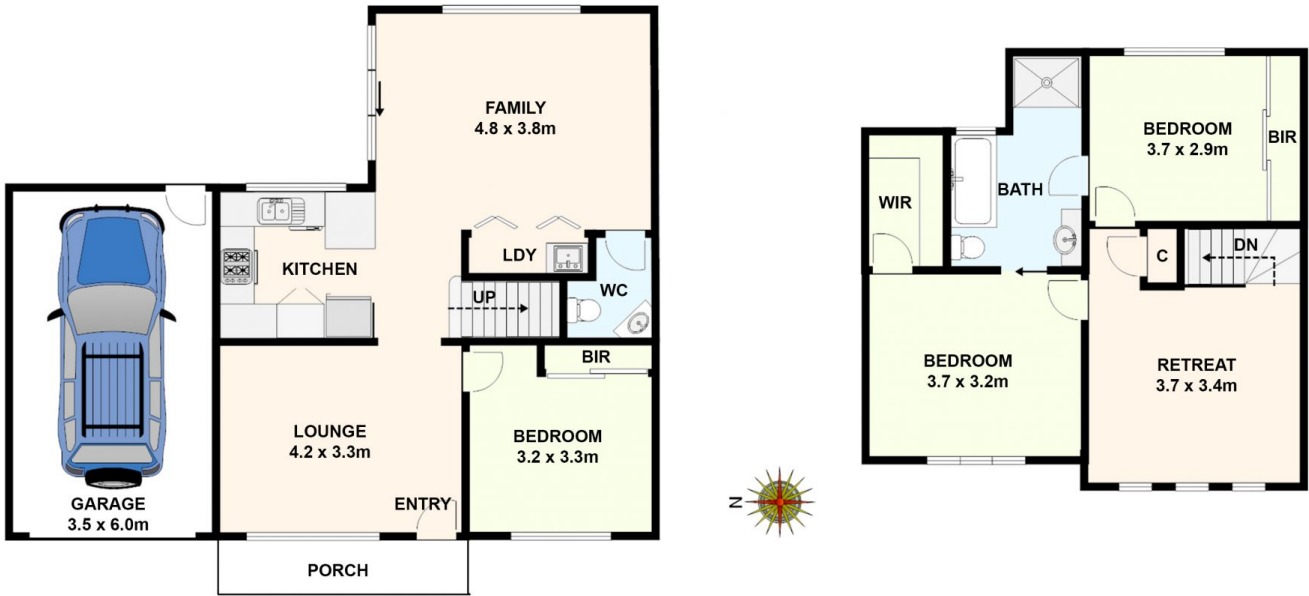
There's character aplenty from the moment you enter, where you're welcomed by the appealing timber floors and a practical floorplan with light filled spaces where

Price : \$ 632,000

View : <https://www.ypa.com.au/7533695>



Michael Sassine
0421 023 243



2/25 Black Street, Westmeadows.

All data and dimensions shown in this sketch are approximate.