



10 Waterford Way Melton West VIC

3 2 2

With a location to envy, this family home sits on the edge of everything that's great about Westlake Estate. Only a short stroll to walking tracks, Westlake reserve, bus stops and St Francis College, it's easy to see why the area is in such high demand.

Comprising three great size bedrooms with built in robes, master bedroom boasting full ensuite and balcony access, whilst the secondary rooms are serviced by a bright central bathroom.

Downstairs provides enough living space for the growing family, Provided by a large lounge room and spacious living and dining area overlooked by the renovated kitchen highlighted by quality cabinetry, ample benchspace and walk in pantry.

Price : \$ 495,000

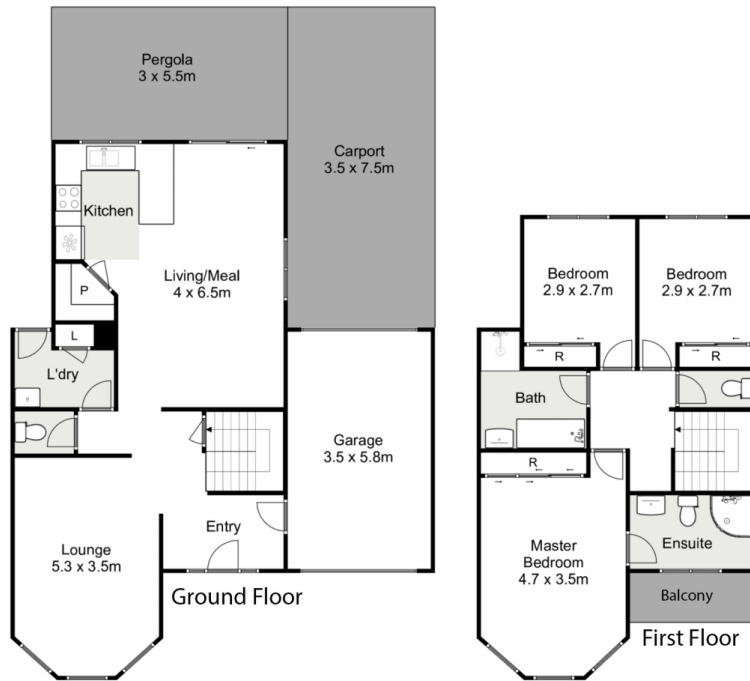
View : <https://www.ypa.com.au/7531904>



Shane Spiteri
0488 980 115



Mark Edwards
0422 017 068



10 Waterford Way, Melton West

YPA

Whilst every attempt has been made to ensure the accuracy of the floor plan contained here, measurements of doors, windows, rooms and any other items are approximate and no responsibility is taken for any error, omission, or mis-statement. This plan is for illustrative purposes only and should be used as such by any prospective purchaser. The services, systems and appliances shown have not been tested and no guarantee as to their operability or efficiency can be given.

