



11 Boyd Court Werribee VIC

4 3 6

Located in arguably one of the most sought-after pockets Wyndham has to offer, location is truly key when it comes to this spectacular home. Positioned on a 693m² (approx.) allotment and within proximity to Pacific Werribee Plaza, public transport, Childcare Centres, and Wyndham Park Primary School all on your doorstep. This is a must-see home in an unbeatable location.

Offering three generous-sized fitted bedrooms master ensuite equipped with a beautiful ensuite whilst the remained of rooms are serviced by the central bathroom. Upon entry, the home flows seamlessly into the expansive formal living which is flooded with plenty of natural light and functional open plan layout. Boasting a great-sized kitchen fitted with ample cupboard, clear bench space and quality appliances all overlooking the kitchen/meals and family room. Whilst around the corner, an expansive third living

Price : \$ 653,000

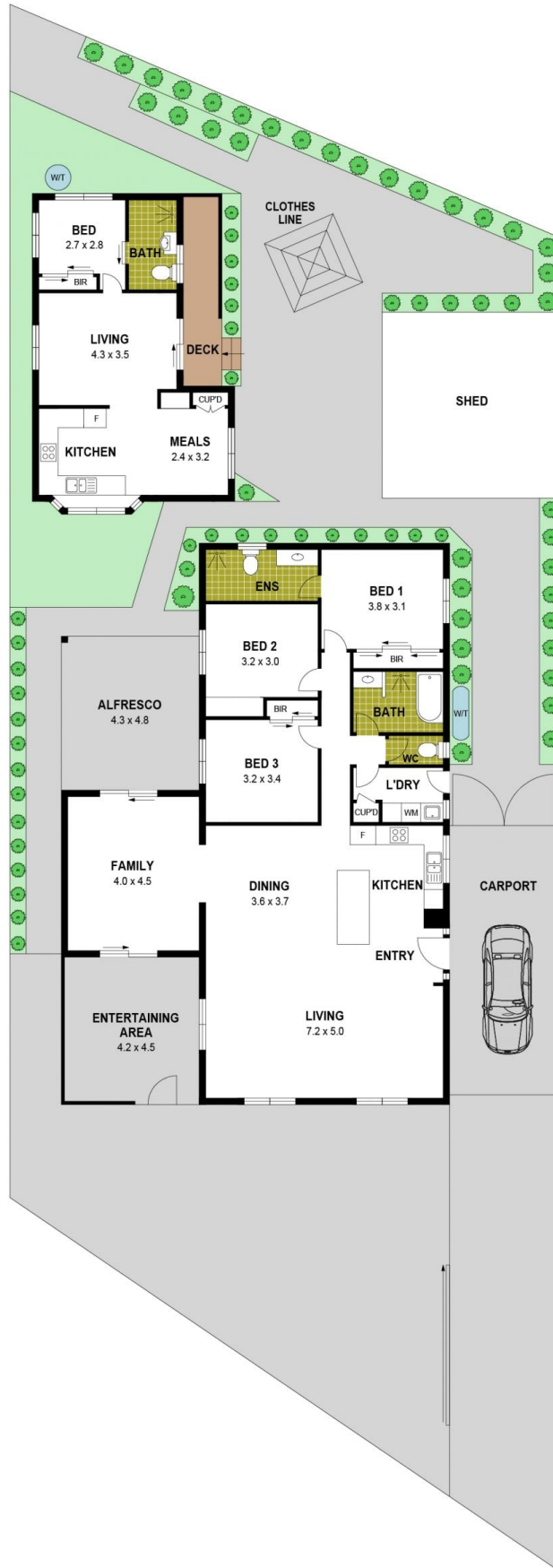
Land Size : 693 sqm

View : <https://www.ypa.com.au/7524798>



James Christou
0450 733 302

11 Boyd Court, Werribee



Disclaimer : Whilst every precaution is taken to ensure information provided regarding this property is highly accurate, the measurements are for guidance only and are not to be used for any other purpose. The agency and creators of this illustration deny responsibility for any omissions or errors contained herein, or for practices carried out with further use of these dimensions. Dimensions are taken from the structural walls in each respective room and will be taken on the longest dimension to maintain uniformity across plans.