



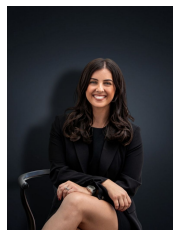
25 Duncans Road Werribee VIC

4 🏠 1 🚗 4 🚗

An incredible opportunity, zoned Activity Centre Zone 1, this here is a dream come true right in the heart of Werribee's vibrant City Centre. A large site with Activity Centre Zoning sprawling across approximately 822 sq m within a very short walk to everything that Werribee has to offer (Approx. 200m). The opportunities available here are endless ranging from development to creating spaces for businesses, shops, offices, and apartment's right in the city centre.

A Minute's walk to Synnot Street commercial precinct, Watton Street cafes, restaurants, shops, Werribee train station, Werribee Secondary College, Mackillop Catholic College, Corpus Christi, Werribee primary, access to princes highway and princes freeway within just a few minutes and finally a 10 minute drive to Wyndham Harbour, Werribee Open Range Zoo, Werribee Park Mansion and

Land Size : 822 sqm
View : <https://www.ypa.com.au/7518451>



Kirsty Cunningham
 0414 344 475



Petar Krnjeta
 0406912320

25 Duncans Road, Werribee



Disclaimer : Whilst every precaution is taken to ensure information provided regarding this property is highly accurate, the measurements are for guidance only and are not to be used for any other purpose. The agency and creators of this illustration deny responsibility for any omissions or errors contained herein, or for practices carried out with further use of these dimensions. Dimensions are taken from the structural walls in each respective room and will be taken on the longest dimension to maintain uniformity across plans.