



14 Clifton Street Aberfeldie VIC

5 3 1

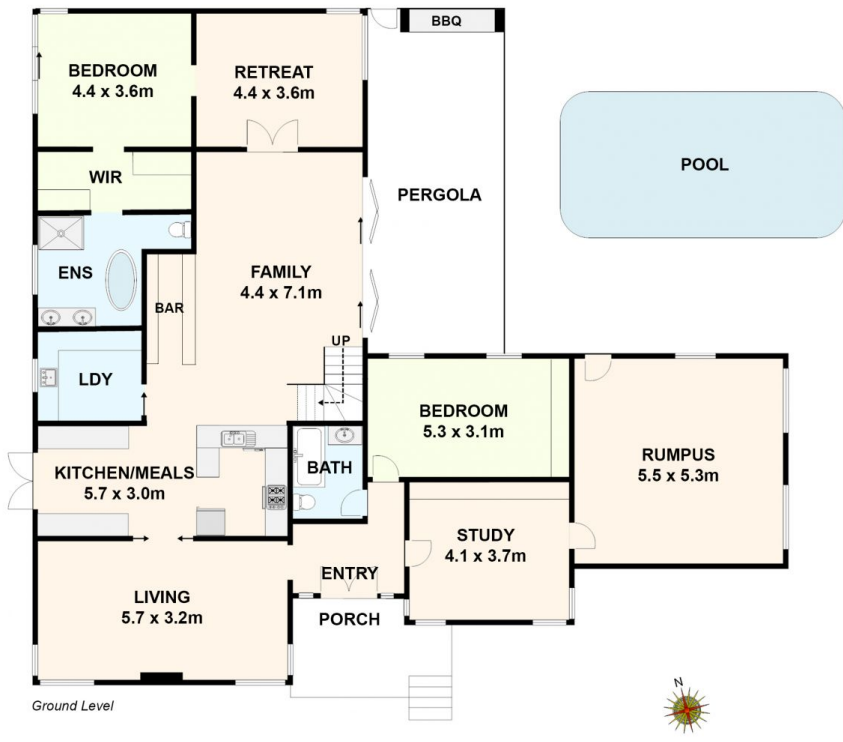
Abundant with space and light, and filled with warmth and charm, this lovely entertainer's residence blends elegant period touches with modern family living in an enviable position, just a short stroll from the Maribyrnong River, with its parks, walking trails and riverside cafes, an array of shopping options and the area's finest schools all close by.

With an elevated aspect, set privately behind a tall fence on a large corner block, the home unfolds through a separate entrance into generous living spaces, all lined with hardwood floors under 12-foot ceilings. A formal lounge with ornate fireplace flows to the timber kitchen, overlooking the casual dining and living spaces equipped with a fabulous bar. Bi-fold doors open the space wide to the spacious alfresco zone, complete with in-ground pool (gas and solar heated), outdoor WC and mains-connected BBQ, for effortless entertaining.

Price : \$ 1,950,000
Land Size : 727 sqm
View : <https://www.ypa.com.au/7510890>



Michael Sassine
0421 023 243



14 Clifton Street, Aberfeldie.
 All data and dimensions shown in this sketch are approximate.