



## 19 Hillside Avenue Dromana VIC

3 2 2

This as New Presented Home will impress you with its Quality, Space & Comfort.

Featuring:

- ? Approx. 27 squares, plenty of space to cater for the large Family
- ? Wide Entrance Hall & Hallways
- ? Huge Formal- & Informal Living Areas
- ? Enormous Master Suite with Dressing Room & Ensuite
- ? Ensuite with Double Vanity & Walk-in Shower
- ? Bedrooms Two & Three with Built-in Robes

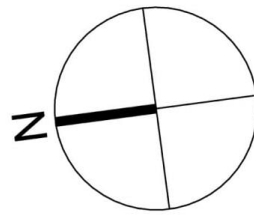
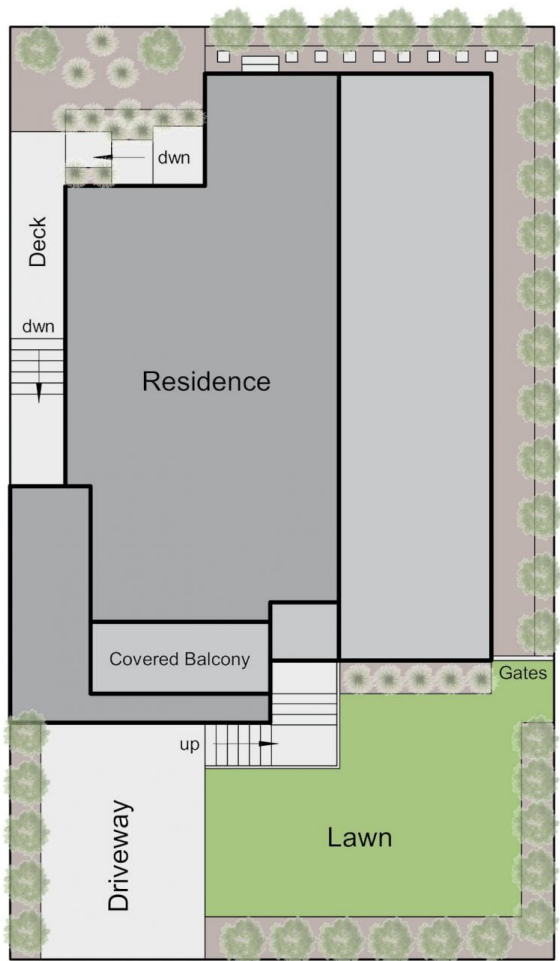
**Price** : \$ 1,300,000  
**Land Size** : 539 sqm  
**View** : <https://www.ypa.com.au/7503772>



**Elke Remscheid**  
0423 211 315

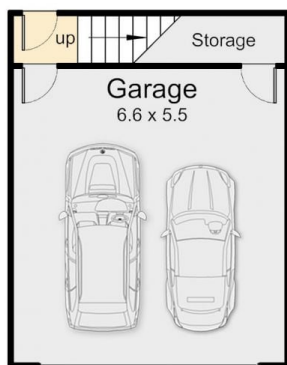


**Melissa Remscheid**  
0432 923 703



Total area = 27 squares (approx)

Site Plan



Lower Floor

Entry Level

## 19 Hillside Avenue, Dromana

This floorplan is for illustration purposes only and no warranty is given to its accuracy. Purchasers are advised to carry out their own investigations. Produced by **realitywriters** (03) 5970 2222