



## 7 Cropley Crescent Laverton VIC

3  1  2 

This lovely home is situated in a highly sought-after location near all amenities and freeway access. It features three comfortable bedrooms, including a master and second bedroom with built-in robes.

**Price** : \$ 572,500

**Land Size** : 580 sqm

**View** : <https://www.ypa.com.au/7482432>

The kitchen boasts plenty of natural light, hardwood timber floors and ample storage space. It also comprises of stainless-steel appliances, a gas cooktop, oven, and an adjacent meals area to complete the picture.

The open lounge area comes with a split system that includes heating and cooling, while the bathroom has a separate shower, bath, and toilet. The outdoors is equally delightful, sitting on approx 580m2 it has a spacious front and backyard perfect for families with children or potential multi unit development site (STCA). There are also a large carport that doubles as an entertaining area and additional

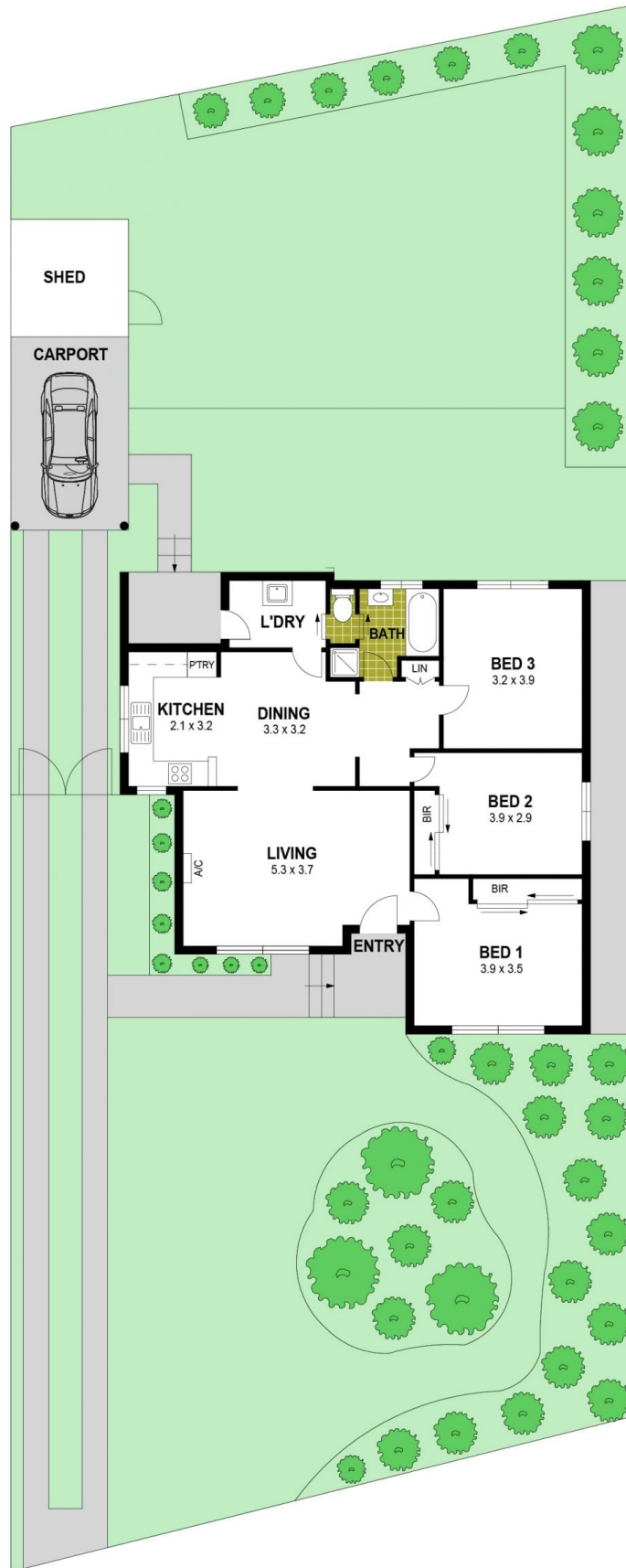


**James Antonio**  
0401 889 248



**Elle James**  
0499 655 382

# 7 Cropley Crescent, Laverton



Disclaimer : Whilst every precaution is taken to ensure information provided regarding this property is highly accurate, the measurements are for guidance only and are not to be used for any other purpose. The agency and creators of this illustration deny responsibility for any omissions or errors contained herein, or for practices carried out with further use of these dimensions. Dimensions are taken from the structural walls in each respective room and will be taken on the longest dimension to maintain uniformity across plans.