



14 Quartok Avenue Werribee VIC

4 2 2

Positioned in one of the most desired pockets of Werribee on a generous 547m² block (approx.) sits this updated family home close by to all the amenities. Everything you could ask for is within close proximity including reputable schools, public transport, Werribee CBD cafes, shops, restaurants, the Werribee train station and Werribee River bike trails and walking tracks just a few minutes away. First home buyers and investors this property is sure to impress, from the prime location it's situated in, to the packed features that it offers inside-out. The home itself offers the next lucky buyers.

Price : \$ 625,000
Land Size : 547 sqm
View : <https://www.ypa.com.au/7462434>

(PHOTO ID REQUIRED AT OPEN FOR INSPECTION)

At YPA Estate Agents 'our service will move you

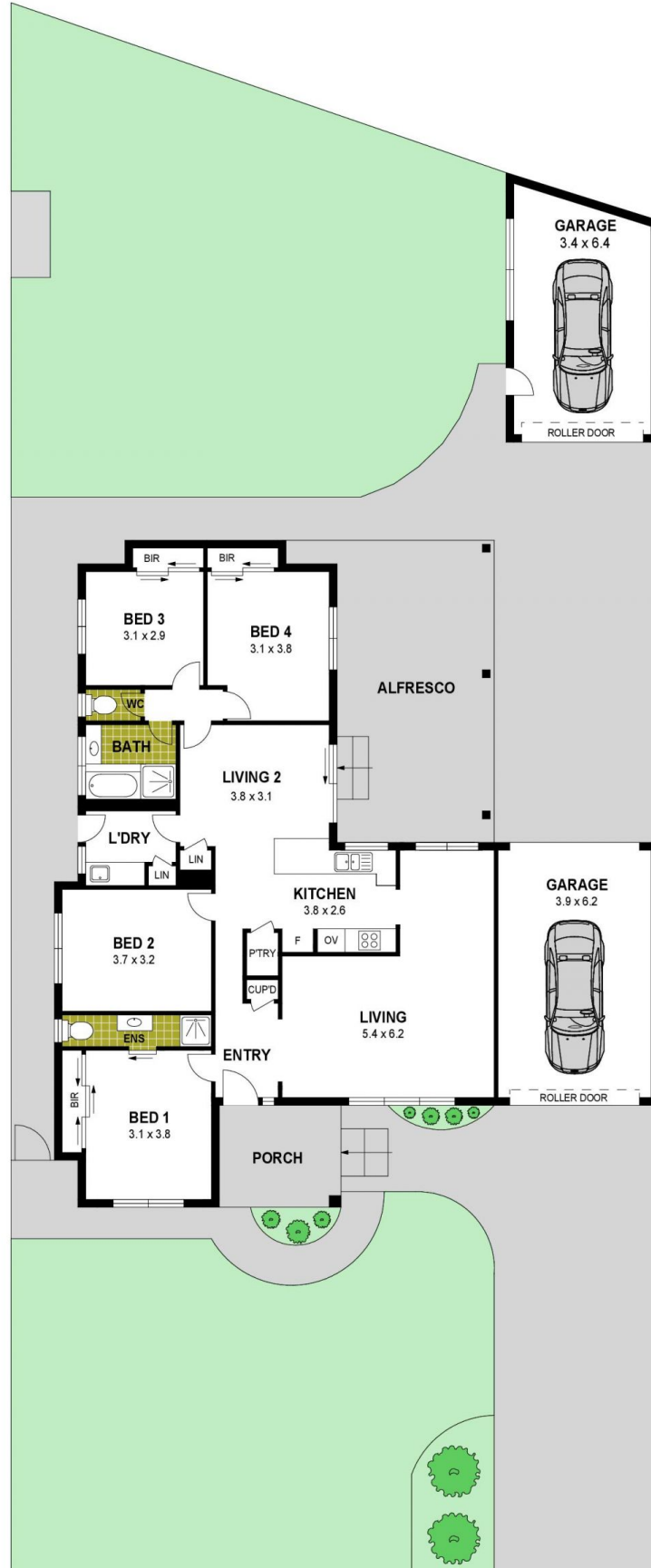


Mitch Smit
0450 913 513



Kirsty Cunningham
0414 344 475

14 Quartok Avenue, Werribee



Disclaimer : Whilst every precaution is taken to ensure information provided regarding this property is highly accurate, the measurements are for guidance only and are not to be used for any other purpose. The agency and creators of this illustration deny responsibility for any omissions or errors contained herein, or for practices carried out with further use of these dimensions. Dimensions are taken from the structural walls in each respective room and will be taken on the longest dimension to maintain uniformity across plans.