



28 Pegasus Road Cranbourne West VIC

4 2 2

Get a sense of high-end contemporary living in this well-appointed 4-bedroom, 2-bathroom family home. The highlights include dual living zones, premium inclusions, modern interiors, four spacious bedrooms, including a luxurious master suite and a separate study.

The central living zone feels vast and open with loads of natural light and seamless indoor/outdoor living expanding the space outside. The designer kitchen features wrap-around dark stone bench tops with breakfast bar, walk-in pantry, and premium stainless-steel appliances, including dishwasher. It spills over onto the formal dining zone and comfortable lounge surrounded by windows. A secluded second lounge makes for the perfect movie theatre, play area or entertainment zone, while the study/home office gives you a quiet space for learning or working from home.

Price : \$ 850,000
Land Size : 448 sqm
View : <https://www.ypa.com.au/7438262>

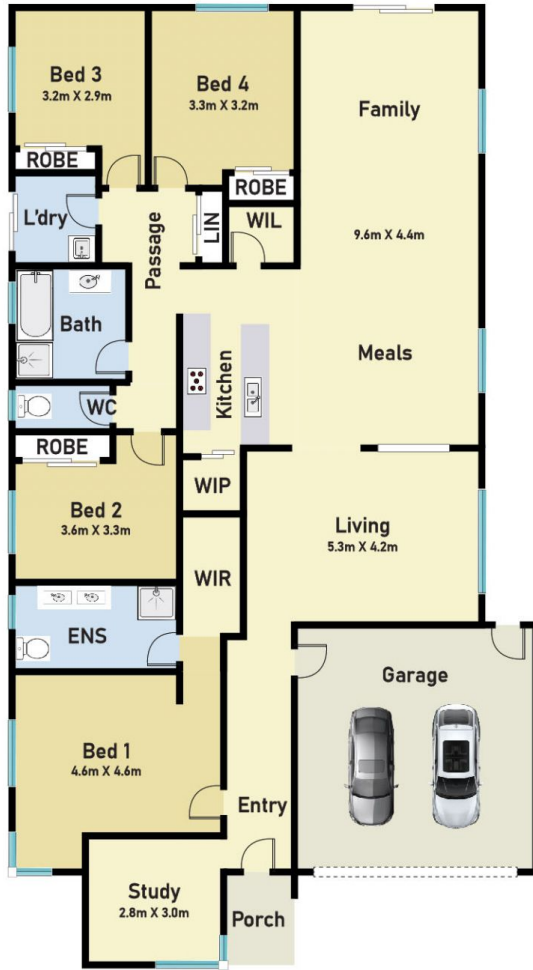


Harpreet Kaur
0481 314 949

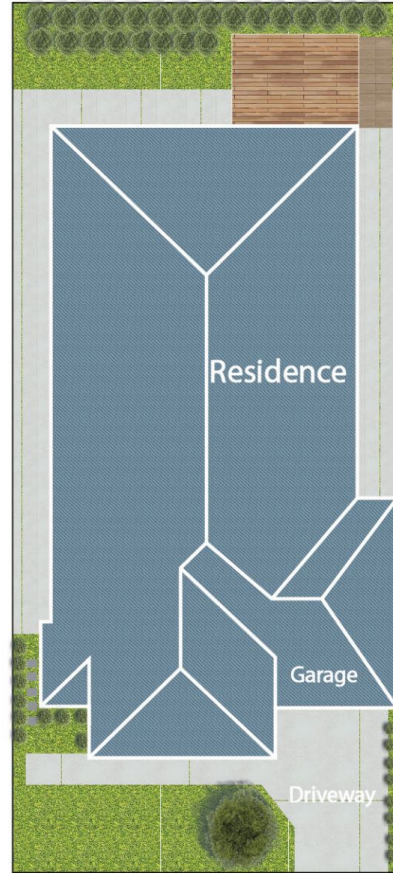


Anita Kumari
0415 461 214

Floor Plan



Site Plan



28 Pegasus Road, Cranbourne West

* Dimensions are approximate and for illustrative purposes only

