



**G10B/23 Cumberland Road Pascoe Vale South VIC**

2  2  1 

A brilliant entry into the area or blue-chip addition to any property portfolio, this bottom-floor PASCO apartment is a winning choice either way with its spacious design & Impressive inclusions.

**Price** : \$ 480,000

**View** : <https://www.ypa.com.au/7418233>

**Features Include:**

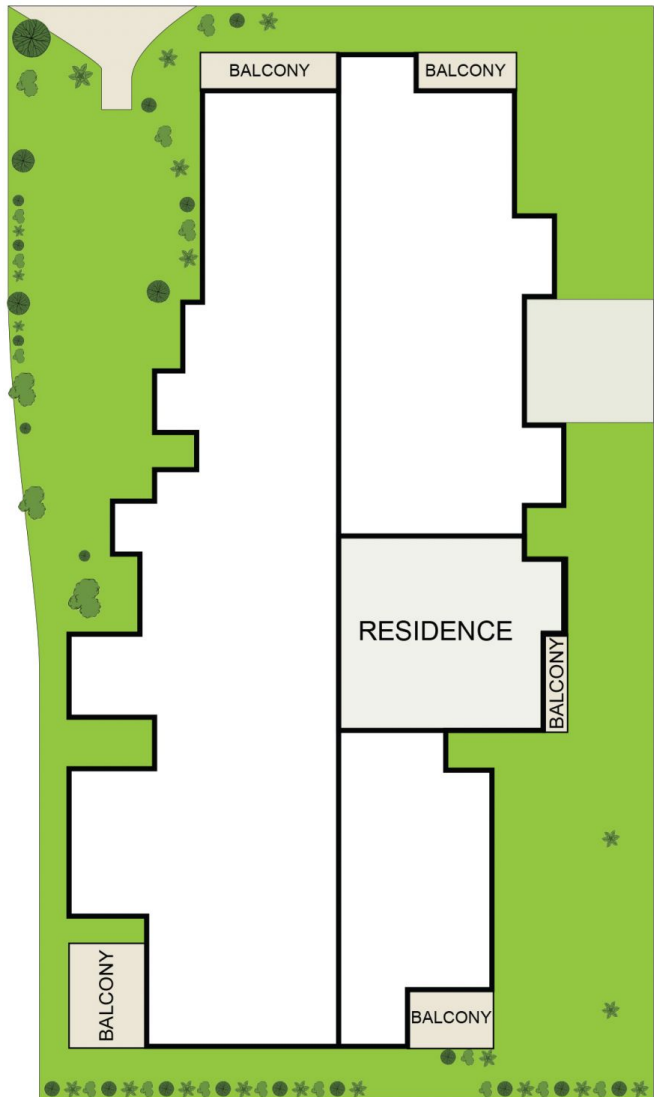
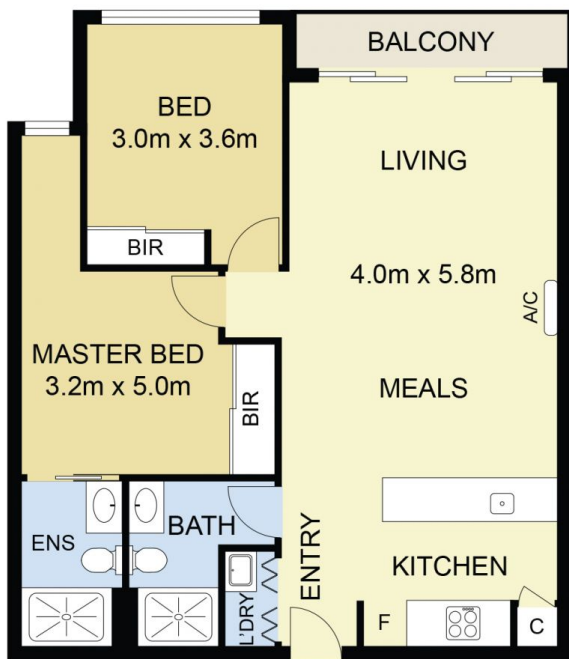
- ? Master bedroom showcases a built-in wardrobe and ensuite with floor to ceiling tiles, stone top vanity and quality fittings
- ? An additional spacious bedroom with a built-in wardrobe
- ? Kitchen complete with ample cupboard space with soft-close drawers, 40mm caesar stone bench top, stainless steel appliance including gas cook top, electric oven, range hood and dishwasher
- ? A versatile open-plan meals and family area leading out to a fully-undercover alfresco allowing ample space for entertaining



**Andrew Migliorisi**  
0432 526 844



**Stephen Azzopardi**  
0402 012 554



SITE PLAN  
(NOT TO SCALE)

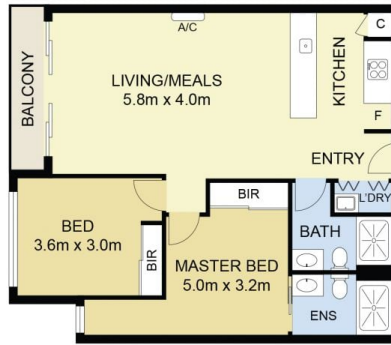


# G10B/23 Cumberland Road, Pascoe Vale South

DISCLAIMER : ALL DIMENSIONS ARE AN APPROXIMATION ONLY AND NO GUARANTEE IS GIVEN WITH RESPECT TO ACCURACY.



SITE PLAN  
(NOT TO SCALE)



G10B/23 Cumberland Road, Pascoe Vale South



DISCLAIMER : ALL DIMENSIONS ARE AN APPROXIMATION ONLY AND NO GUARANTEE IS GIVEN WITH RESPECT TO ACCURACY.